



Manor Gardens, N7

£625,000

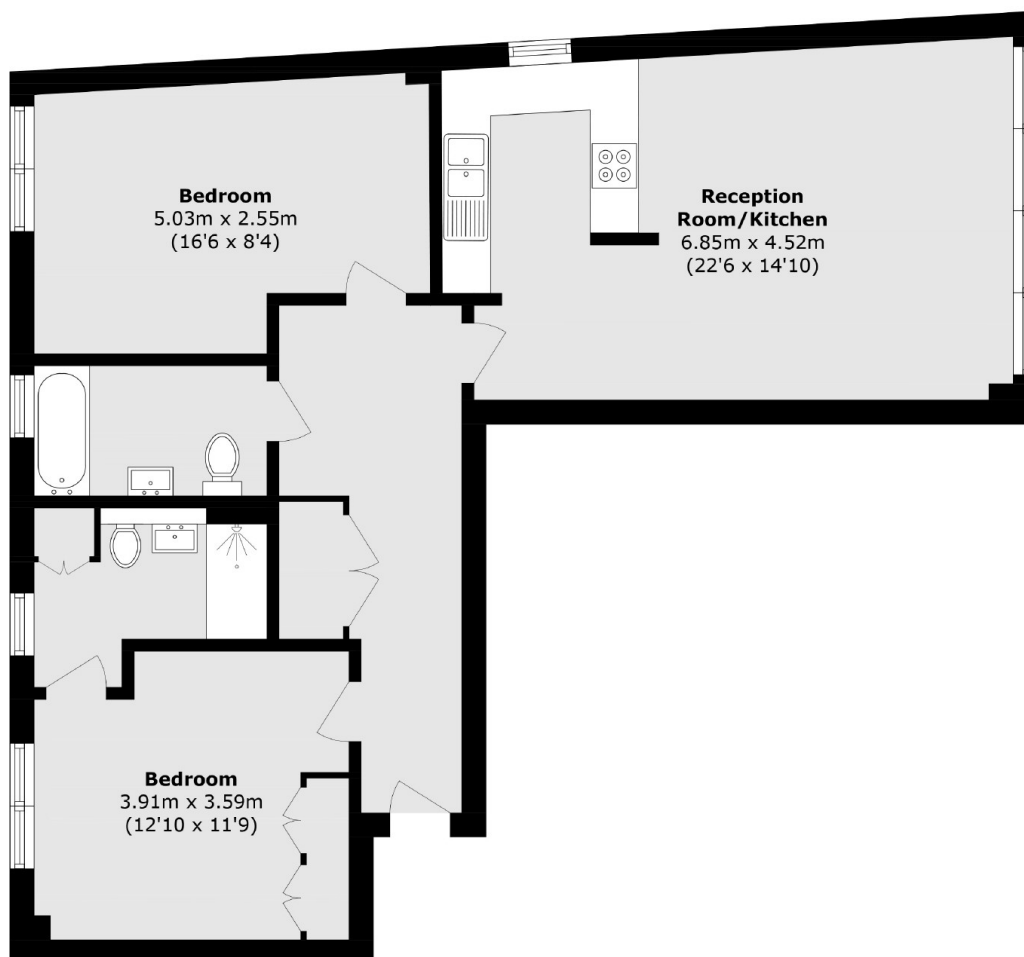
A spacious two double bedroom, two bathroom apartment within a modern development. The apartment has a large open plan living area with a modern kitchen, a contemporary bathroom and good storage throughout.

Manor Gardens offers fantastic transport links, being within a mile of Holloway, Finsbury Park and Archway stations. An excellent range of shops, cafés and restaurants can be found nearby on Holloway Road.

Features

- Two Bedrooms
- Two Bathrooms
- Great Location
- Wooden Floors
- Good Storage
- High Ceilings

Manor Gardens, London, N7



Total area (approx.): 84.0 sq. m (904.1 sq. ft)