

Manor Gardens, N7

£625,000

A fantastic two bedroom freehold house with a private patio garden and allocated parking. Perfect for a first time buyer, investors or for that next step up the property ladder. Offered chain free.

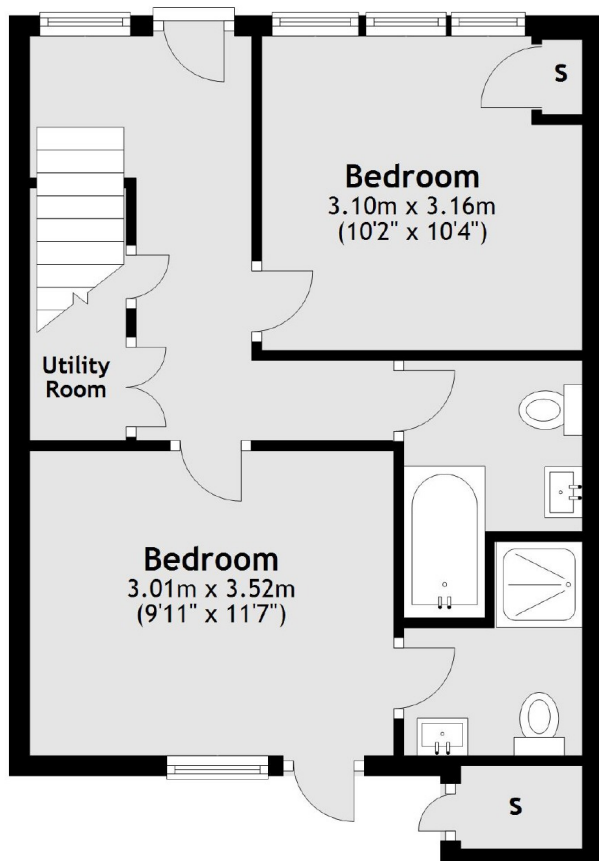
Manor Gardens offers fantastic transport links, being within a mile of Holloway Road tube (Piccadilly line), Finsbury Park tube (Piccadilly line), Archway tube (Northern line) and Upper Holloway overground station.

Features

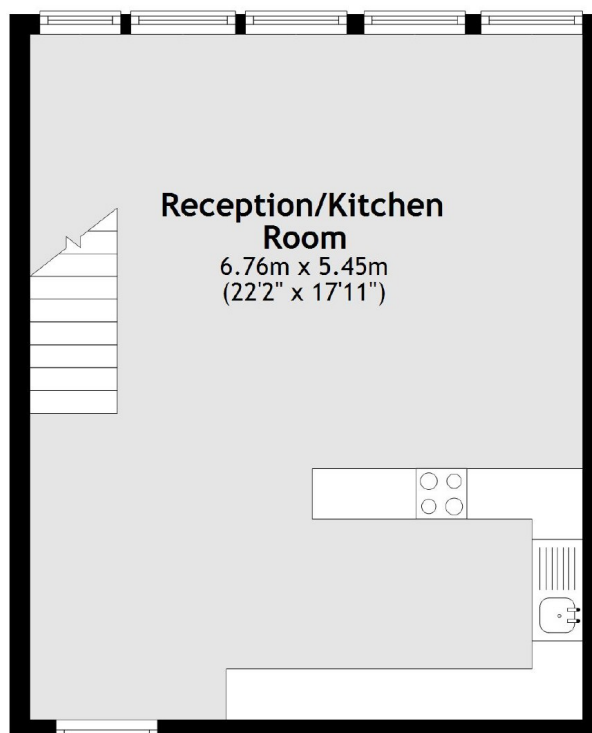
- Two Double Bedrooms
- Two Bathrooms
- Private Patio Garden
- Private Parking
- Freehold House
- Good Transport Links

Manor Gardens, London, N7

Ground Floor



First Floor



Total area: approx. 76.2 sq. metres (820.4 sq. feet)