



Ingestre Road, NW5

£375,000

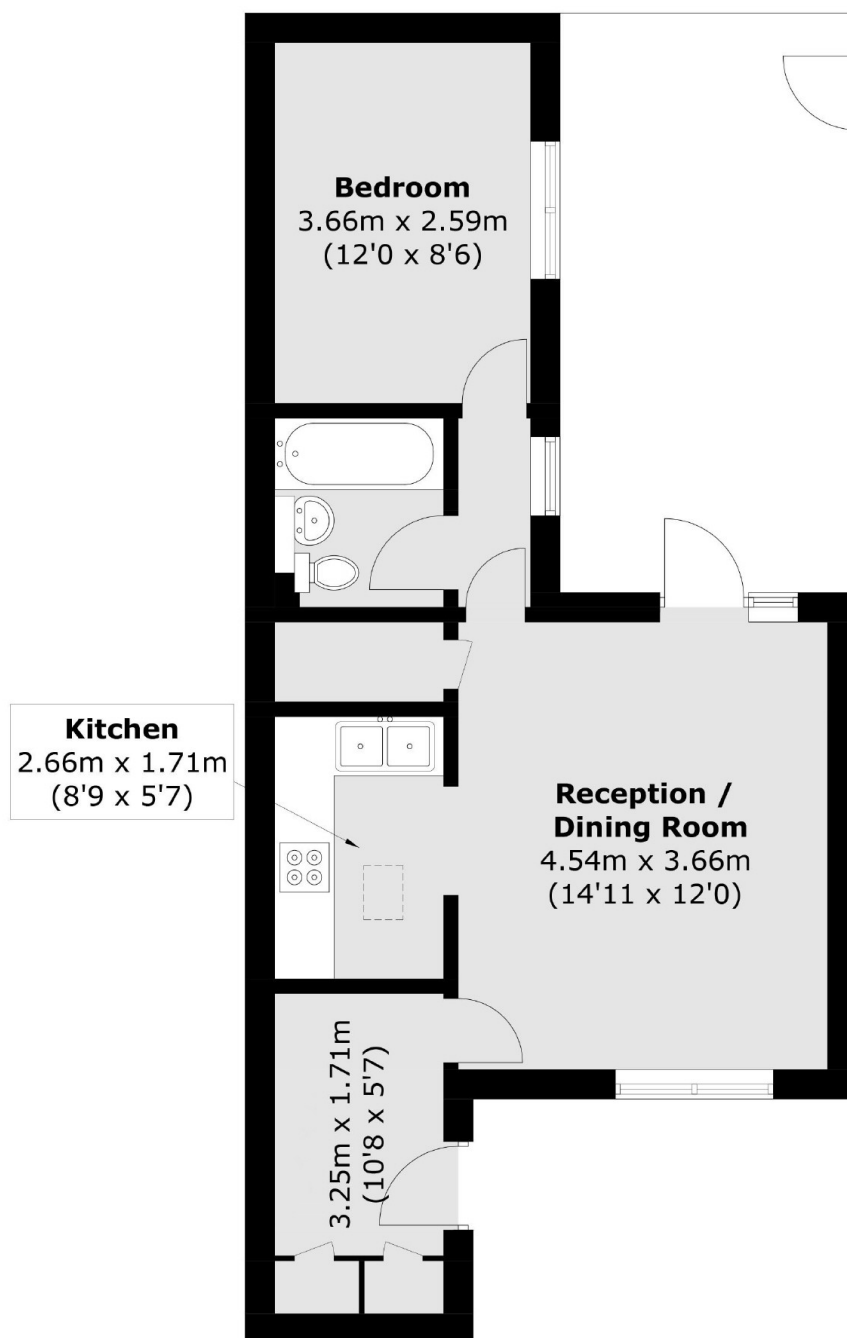
A charming one bedroom apartment situated on the ground floor of a well-maintained building. This apartment offers open plan living, a private patio and is being sold on a chain free basis.

This property is situated on the junction of Burghley Road and Ingestre Road, quiet residential roads just off Fortress Road, which offers excellent transport links and a range of popular shops, restaurants and cafés.

Features

- One Bedroom
- Private Patio
- Chain Free
- Great Transport Links
- Leasehold
- Close to Hampstead Heath

Ingestre Road, London, NW5



Total area (approx.): 45.2 sq. m (486.5 sq. ft)