



Burghley Road, NW5

£500,000

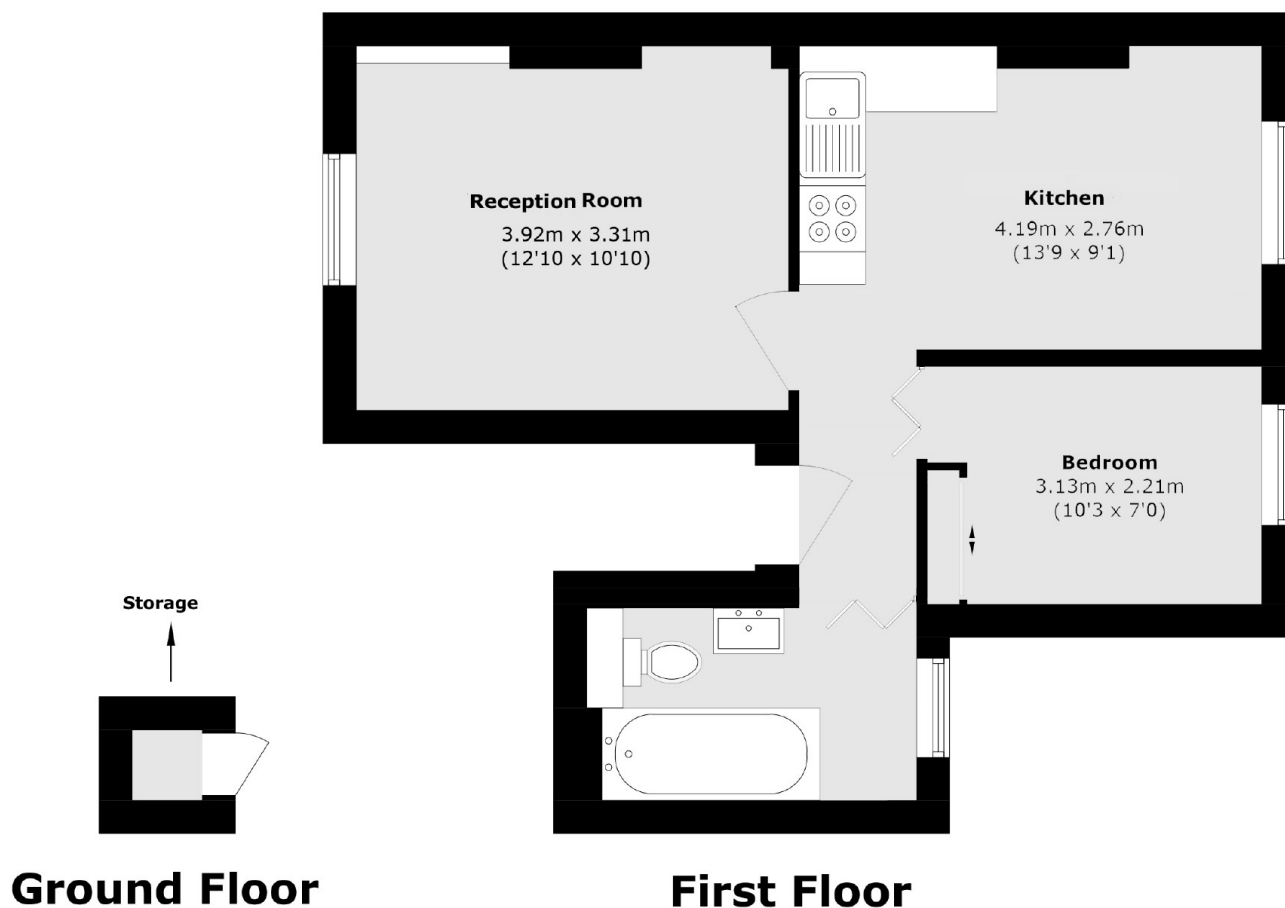
A quaint one bedroom apartment located on the first floor of a Victorian house. This property has a bright reception room including period features and a separate kitchen with plenty of storage.

Burghley Road is a fantastic location, being close to both Tufnell Park and Kentish Town underground stations (Northern line) and has an array of cafés, restaurants and bars just a stones throw away.

Features

- Period Conversion
- Great Location
- Share of Freehold
- Chain Free
- One Bedroom
- First Floor

Burghley Road, London, NW5



Total area (approx.): 40.0 sq. m (430.5 sq. ft)
Outbuilding (approx.): 0.4 sq. m (4.3 sq. ft)