



Bickerton Road, N19

£800,000

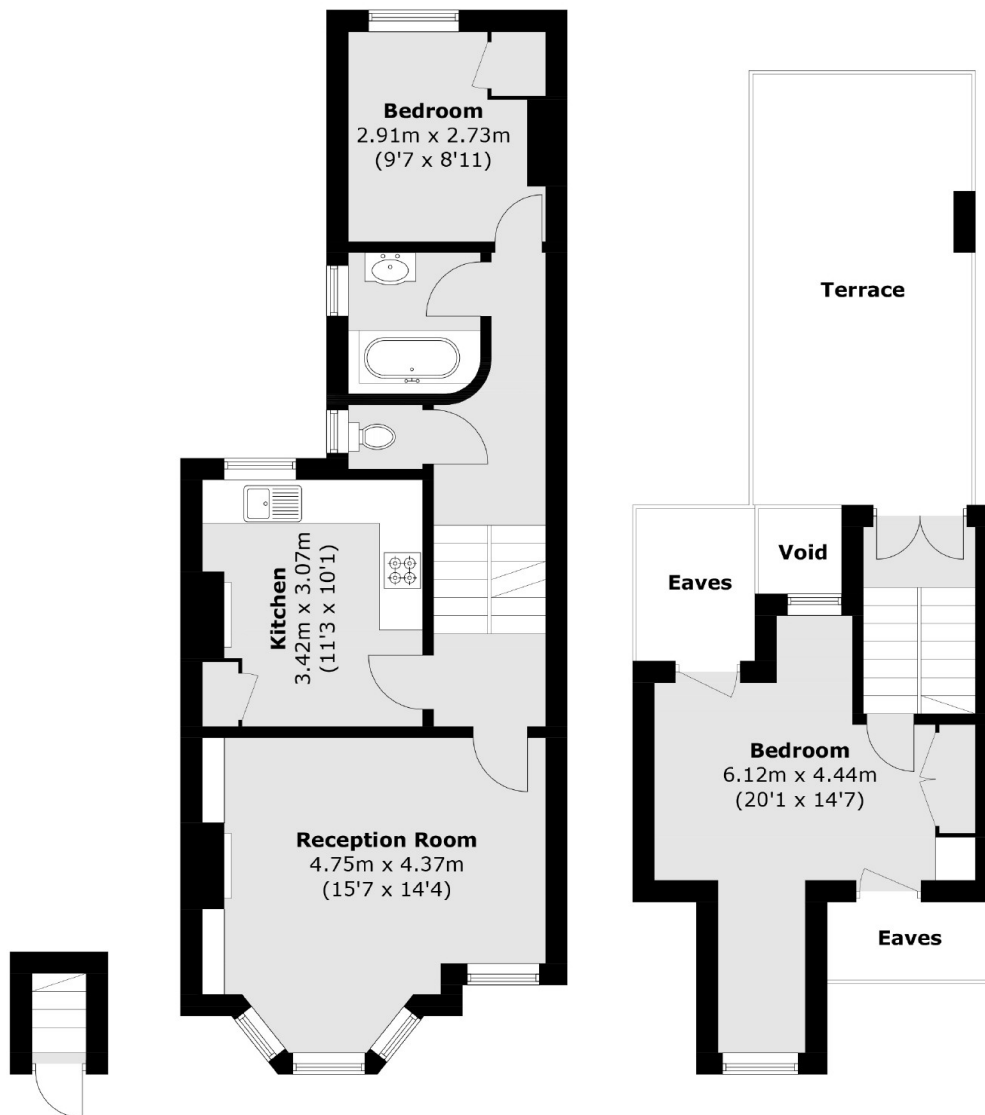
Set across the upper floors of a Victorian house and ideally positioned directly opposite Dartmouth Park, a beautifully presented two bedroom maisonette offering spacious accommodation and a private terrace.

Bickerton Road is in a key position moments from Waterlow Park and close to the charming street cafes of Swains Lane and Hampstead Health. The property is also close to both Archway and Tufnell Park tube stations on the Northern line

Features

- Two Double Bedrooms
- Private Terrace
- Prime Location
- Great Transport Links
- Share of Freehold
- Period Features

Bickerton Road, London, N19



Ground Floor First Floor

Second Floor

Total area (approx.): 72.5 sq. m (780.4 sq. ft)
(Excluding Void / Excluding Eaves)
Terrace: 18.1 sq. m (194.8 sq. ft)

Dexters

Dartmouth Park & Tufnell Park
64 Chetwynd Road
Dartmouth Park
London
Sales
020 7284 0101

Energy Rating: E. We aim to make our particulars both accurate and reliable. However they are not guaranteed; nor do they form part of an offer or contract. If you require clarification on any points then please contact us, especially if you're traveling some distance to view. Please note that appliances and heating systems have not been tested and therefore no warranties can be given as to their good working order.

RICS | Regulated
Estate Agent
and Letting Agent

dexters.co.uk