

Southcote Road, N19

£475,000

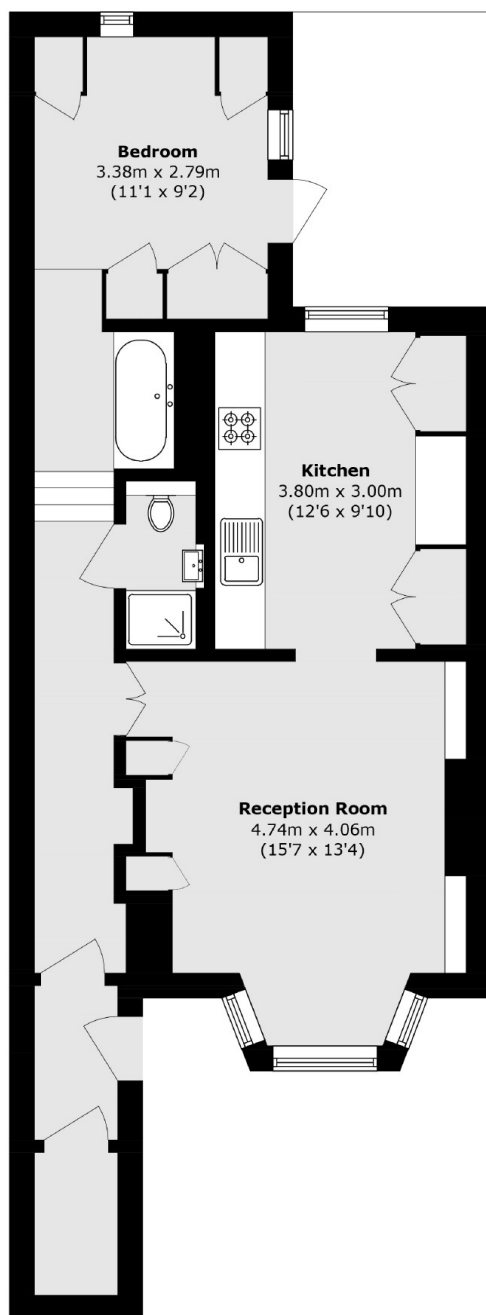
A spacious one bedroom garden flat set within a Victorian terraced house. The property features a bright and spacious reception room leading to an open plan kitchen, and direct access to a private patio from the bedroom.

Southcote Road is superbly placed for instant access to Tufnell Park tube, the eclectic mix of independent shops and eateries on Fortress Road and is still within easy reach of Hampstead Heath.

Features

- Open Plan Reception/Kitchen
- Private Entrance
- Premium Road
- Period Conversion
- Private Patio Garden
- Ample Storage

Southcote Road, London, N19



Total area (approx.): 54.8 sq. m (589.9 sq. ft)

Dexters

Dartmouth Park & Tufnell Park
64 Chetwynd Road
Dartmouth Park
London
Sales
020 7284 0101

Energy Rating: D. We aim to make our particulars both accurate and reliable. However they are not guaranteed; nor do they form part of an offer or contract. If you require clarification on any points then please contact us, especially if you're traveling some distance to view. Please note that appliances and heating systems have not been tested and therefore no warranties can be given as to their good working order.

 **RICS** | Regulated
Estate Agent
and Letting Agent

[dexters.co.uk](https://www.dexters.co.uk)