



Hargrave Road, N19

£1,300,000

A spacious Victorian house set over four floors, including a full height lower ground floor. This house retains many period features, offering the opportunity to create a fantastic family home.

Hargrave Road is located close to both Archway and Tufnell Park underground stations. There is an excellent range of independent retailers on Junction Road and Fortress Road, and Hampstead Heath is within a mile.

Features

- Freehold
- Modernisation Potential
- Close to Transport
- Residential Road
- Two Entrances
- South West Facing Garden



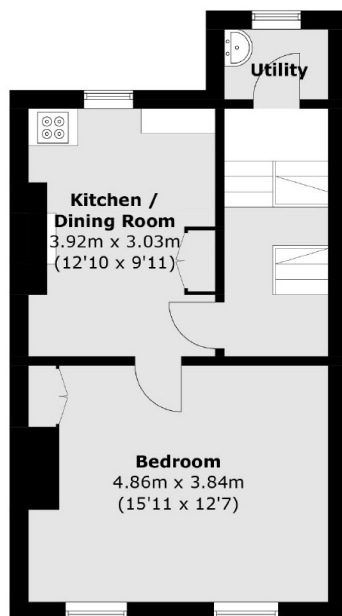
Hargrave Road, N19

As you enter the property on the ground floor, you'll find the reception area to your left, currently arranged as two separate rooms. Continuing down the corridor and into the lower ground floor, there's an additional reception room situated just behind a bedroom, which opens out to a south facing garden, perfect for entertaining.

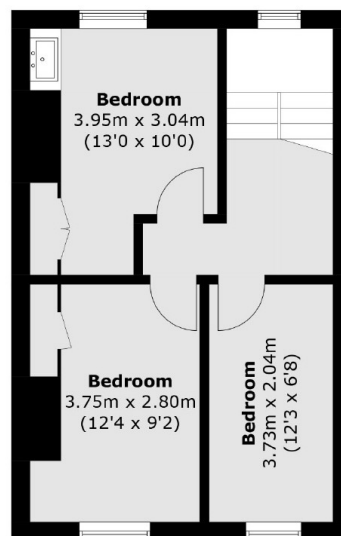
Heading back upstairs to the first floor, you'll find the kitchen, which then leads to another good-sized bedroom. Finally, on the second and top floor, the property offers three additional bedrooms, completing this spacious and well-arranged home.



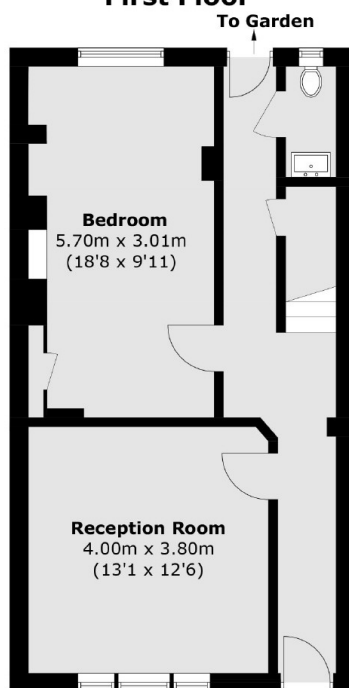
Hargrave Road, London, N19



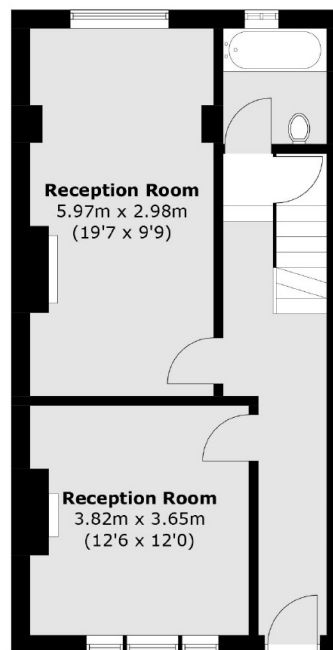
First Floor



Second Floor



Lower Ground Floor



Ground Floor

Total area (approx.): 177.3 sq. m (1,908.4 sq. ft)