

Chetwynd Road, NW5

£800,000

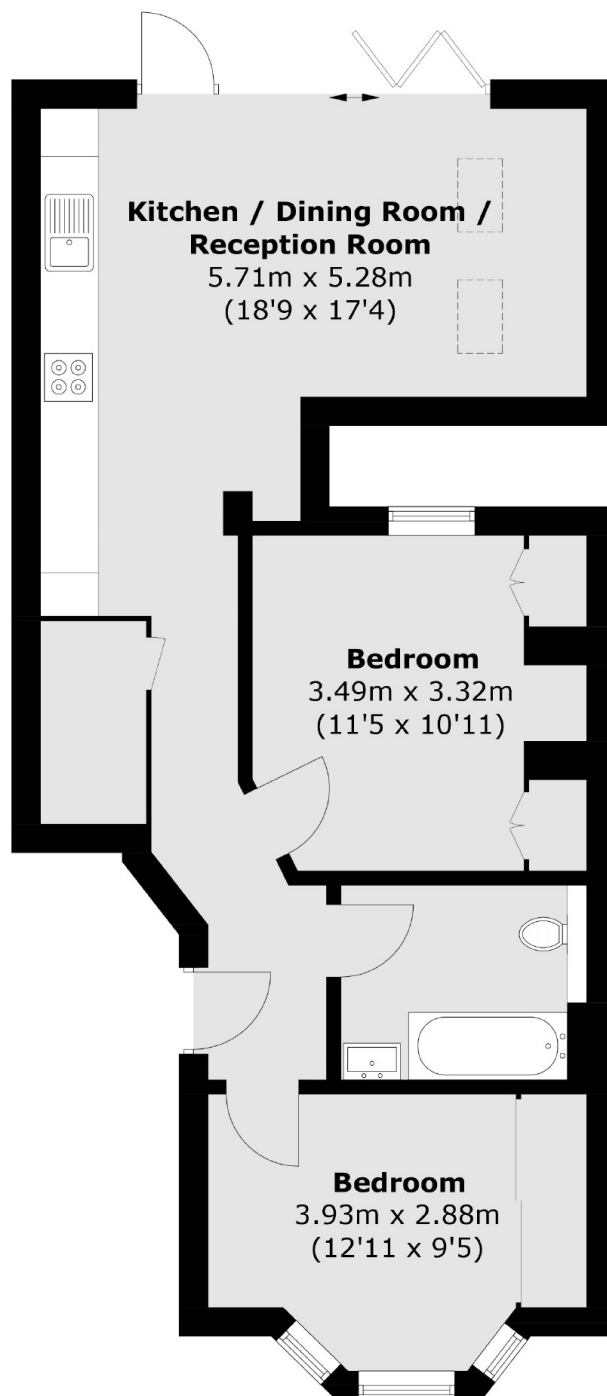
A beautifully presented two bedroom garden flat within a Victorian terraced house. The flat has a light-filled, open plan reception room/kitchen, complemented by double-height doors providing direct access to a secluded garden.

Chetwynd Road is in the heart of the Dartmouth Park Conservation Area, just moments from Hampstead Heath. Tufnell Park and Gospel Oak stations are nearby, along with a range of shops, cafés and pubs.

Features

- Two Bedrooms
- Private Garden
- Victorian Conversion
- Open Plan Living
- Great Location
- Close to the Heath

Chetwynd Road, London, NW5



Total area (approx.): 60.0 sq. m (645.8 sq. ft)

Dexters

Dartmouth Park & Tufnell Park
64 Chetwynd Road
Dartmouth Park
London
Sales
020 7284 0101

Energy Rating: C. We aim to make our particulars both accurate and reliable. However they are not guaranteed; nor do they form part of an offer or contract. If you require clarification on any points then please contact us, especially if you're traveling some distance to view. Please note that appliances and heating systems have not been tested and therefore no warranties can be given as to their good working order.

 **RICS** | Regulated
Estate Agent
and Letting Agent

[dexters.co.uk](https://www.dexters.co.uk)