

# **Tremlett Grove**

**St John's Grove Conservation Area, N19**

**Dexters**





## About the property

Situated on a desirable tree-lined street, a superbly presented Victorian house with four bedrooms. Arranged over four floors, this exceptional property features a large living area with high-ceilings and a south west facing garden.

On the ground floor there is a spacious open plan kitchen with a side return extension which has floor-to-ceiling glass offering views of garden, perfect for entertaining friends and family.

The first floor includes a double bedroom, a bathroom and a second reception room, which could serve as a fifth bedroom. On the second floor is a generously sized en suite principal bedroom and the upper floor has another en suite bedroom. Both of these rooms have an impressive view of the East London skyline.

Located close to both Archway and Tufnell Park stations, the excellent range of independent retailers on Junction Road, and is within walking distance of Hampstead Heath.

## Key features

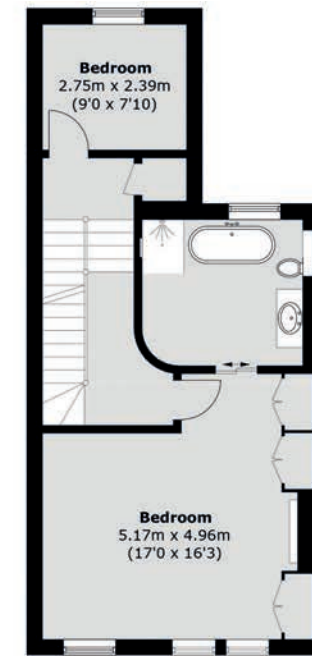
- Four Bedrooms
- Private Garden
- End of Terrace
- Open Plan Living
- Great Transport Links
- Victorian Features



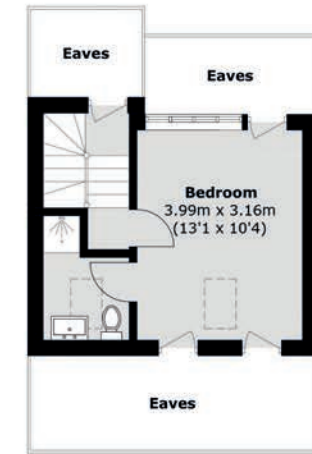




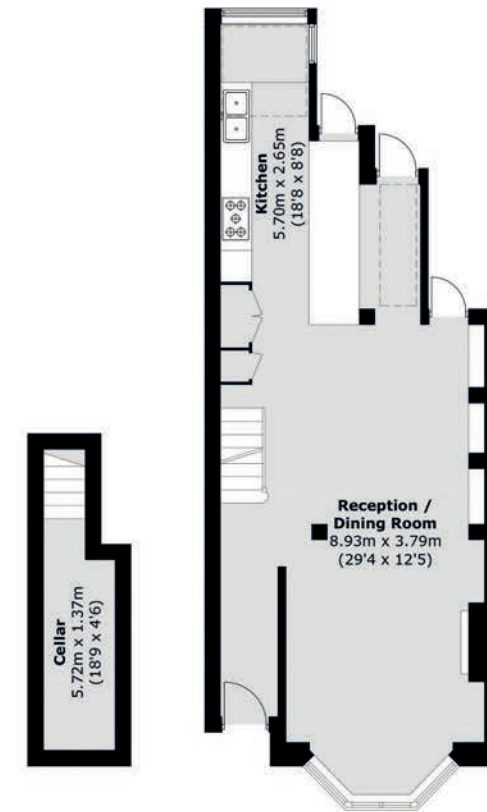




Second Floor

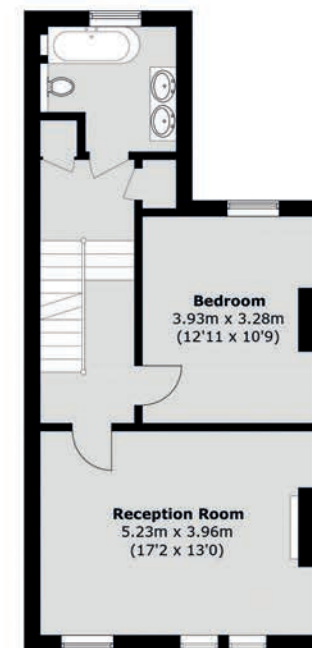


Third Floor



Lower Ground Floor

Ground Floor



First Floor

TOTAL APPROX. FLOOR AREA 2,022.4 SQ. FT (187.9 SQ. M) (INCLUDING CELLAR / EXCLUDING EAVES)

Energy Rating: D. We aim to make our particulars both accurate and reliable. However they are not guaranteed; nor do they form part of an offer or contract. If you require clarification on any points then please contact us, especially if you're traveling some distance to view. Please note that appliances and heating systems have not been tested and therefore no warranties can be given as to their good working order.



Dexters Dartmouth Park & Tufnell Park  
64 Chetwynd Road,  
London, NW5 1DE  
020 7284 0101

**Dexters**