



York Way Estate, N7 £300,000

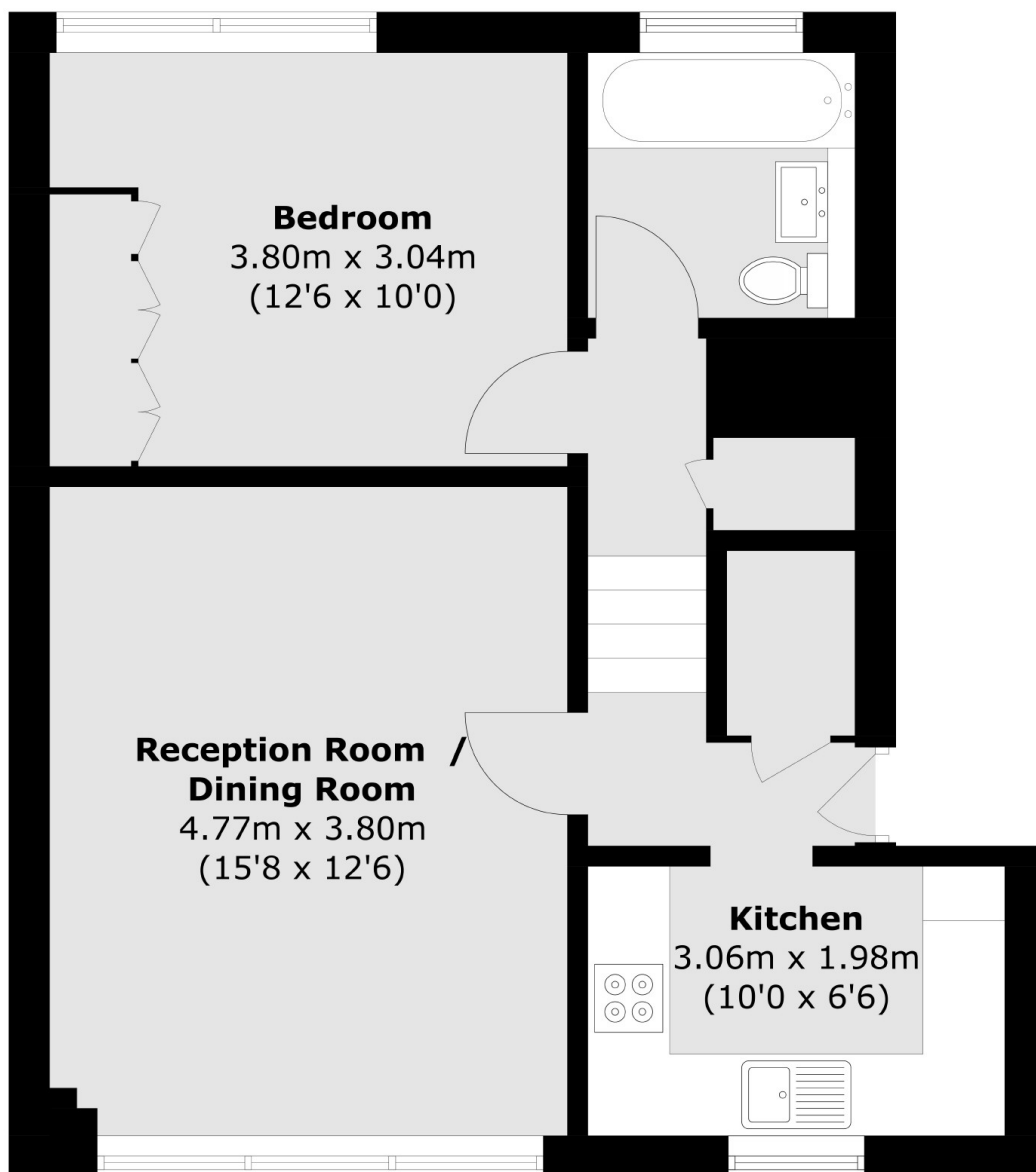
A large one double bedroom flat in a purpose-built development. This property has a large reception room/ dining room, a separate kitchen and there is ample storage throughout.

Shepherd House is ideally located close to both Caledonian Road and King's Cross underground stations. The expansive Caledonian Park and Market Road Gardens are also nearby.

Features

- Large Double Bedroom
- Good Transport Links
- Purpose Built
- Great Amenities
- Communal Gardens
- Separate Kitchen

York Way Estate, London, N7



Total area (approx.): 49.3 sq. m 530.7 sq. ft)