



Anson Road, N7

£800,000

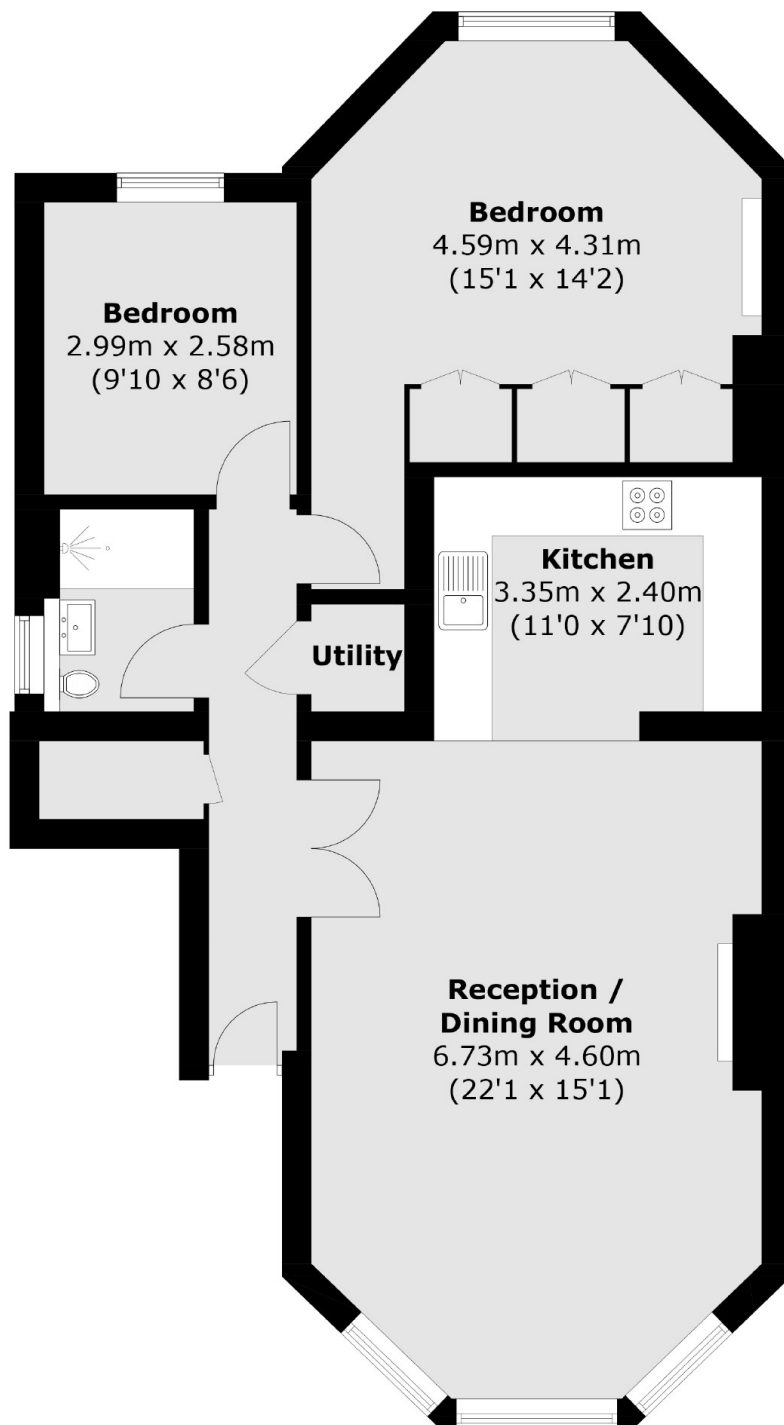
A two double bedroom apartment set in a characterful, semi-detached Victorian conversion. The apartment has a large, open plan reception room/kitchen, and access to a shared, south-facing garden.

Anson Road is a sought after tree-lined road within half a mile of Tufnell Park tube (Northern line) and within a mile of Kentish Town station (Northern line & Thameslink) and Caledonian Road tube (Piccadilly line).

Features

- Share of Freehold
- Two Bedrooms
- Victorian Conversion
- Large Shared Garden
- High Ceilings Throughout
- Great Location

Anson Road, London, N7



Total area (approx.): 79.9 sq. m (860.0 sq. ft)

Dexters

Dartmouth Park & Tufnell Park
64 Chetwynd Road
Dartmouth Park
London
Sales
020 7284 0101

Energy Rating: C. We aim to make our particulars both accurate and reliable. However they are not guaranteed; nor do they form part of an offer or contract. If you require clarification on any points then please contact us, especially if you're traveling some distance to view. Please note that appliances and heating systems have not been tested and therefore no warranties can be given as to their good working order.

 **RICS** | Regulated
Estate Agent
and Letting Agent

dexters.co.uk