

Hugo Road
Tufnell Park, N19

Dexters



About the property

A beautiful end-of-terrace Victorian house, seamlessly blending period charm with modern design elements. The house has been thoughtfully renovated to provide functional living areas and exceptional features that make it ideal for families.

The entrance opens to a bright hallway with built-in storage, leading to both the reception room and garden. The open plan kitchen features Maxlight sliding doors, connecting to the mature garden with a fig tree, jasmine and olive trees.

The living room offers concealed storage, a wood fireplace, and underfloor heating.

The principal bedroom has a dressing room, hidden headboard storage and a glass-ceilinged en suite. An adjoining reception room retains original cornicing, a fireplace, and a concealed glass-walled annex. Upstairs are two bedrooms with built-in storage and a loft bedroom.

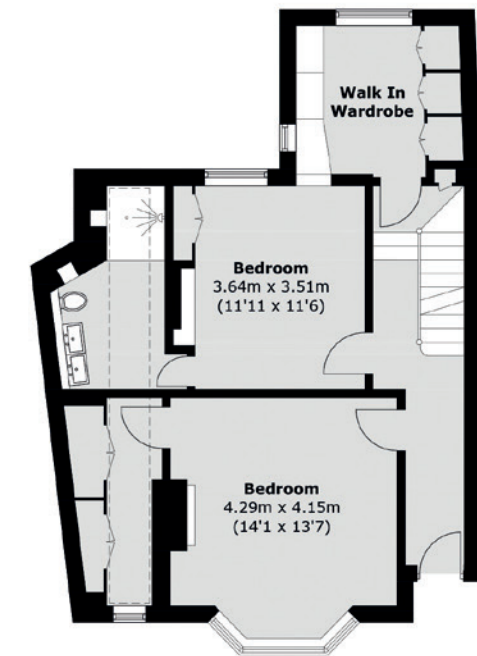
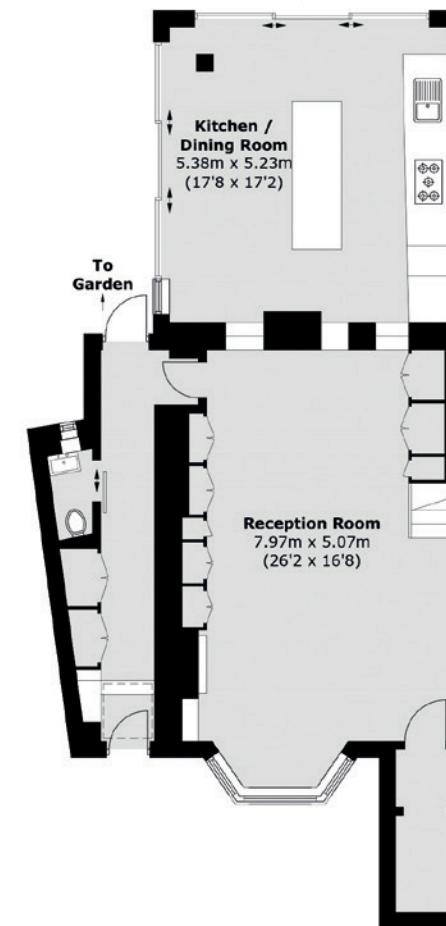
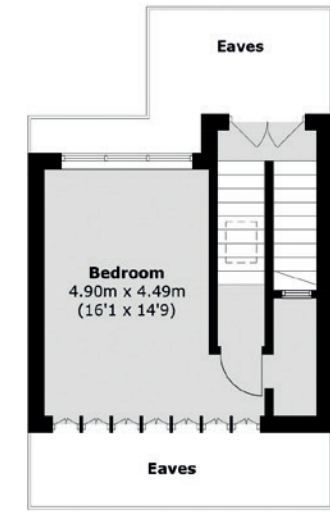
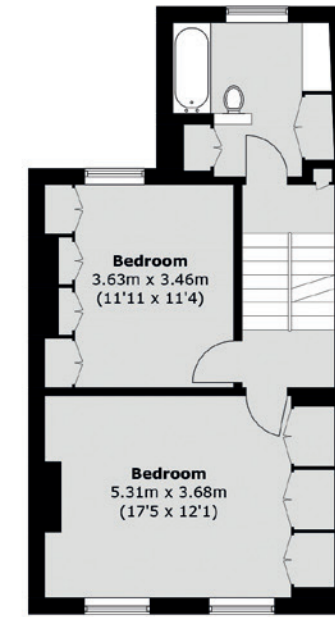
Tufnell Park is a vibrant community with highly regarded schools and beautiful green spaces, like Hampstead Heath.

Key features

- Five Bedrooms
- Spacious Living Area
- Modern Kitchen Extension
- Charming Period Details
- Private Garden
- Victorian House

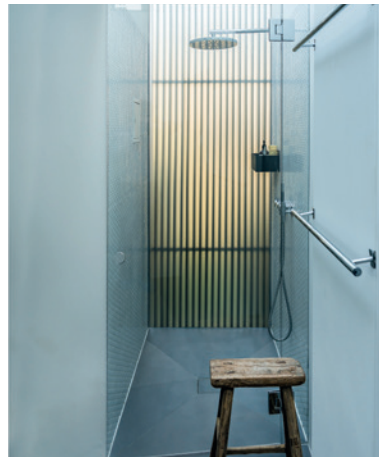






TOTAL APPROX. FLOOR AREA 2,402.4 SQ. FT (223.2 SQ. M) (EXCLUDING EAVES)

Energy Rating: C. We aim to make our particulars both accurate and reliable. However they are not guaranteed; nor do they form part of an offer or contract. If you require clarification on any points then please contact us, especially if you're traveling some distance to view. Please note that appliances and heating systems have not been tested and therefore no warranties can be given as to their good working order.



Dexters Dartmouth Park & Tufnell Park
64 Chetwynd Road,
London, NW5 1DE
020 7284 0101

Dexters