



Empire Square, N7

£500,000

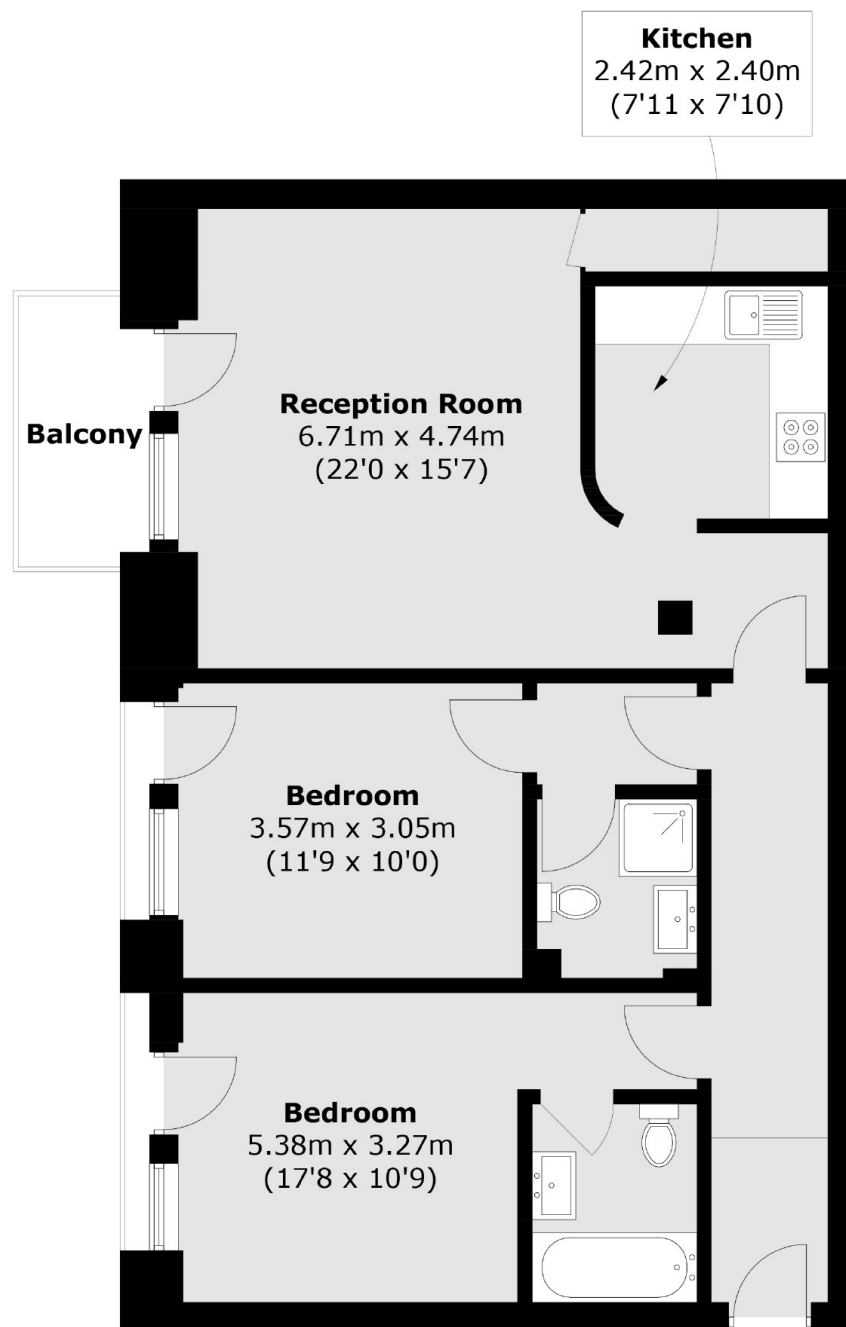
Situated on the second floor of a contemporary block, this property offers two en suite double bedrooms and a large, semi-open plan kitchen/reception room with a private balcony.

Located close to Whittington Park and within a mile of Tufnell Park station (Northern line) and Holloway Road station (Piccadilly line). Local bus access can also be found on Holloway Road.

Features

- Two Double Bedrooms
- Two Bathrooms
- Private Balcony
- Chain Free
- Great Transport Links
- Gated Development

Empire Square, London, N7



Total area (approx.): 76.2 sq. m (820.2 sq. ft)
Balcony (approx.): 3.6 sq. m (38.7 sq. ft)

Dexters

Dartmouth Park & Tufnell Park
64 Chetwynd Road
Dartmouth Park
London
Sales
020 7284 0101

Energy Rating: C. We aim to make our particulars both accurate and reliable. However they are not guaranteed; nor do they form part of an offer or contract. If you require clarification on any points then please contact us, especially if you're traveling some distance to view. Please note that appliances and heating systems have not been tested and therefore no warranties can be given as to their good working order.

 **RICS** | Regulated
Estate Agent
and Letting Agent

dexters.co.uk