



Brookfield Park, NW5

£2,500,000

Dexters



Brookfield Park, NW5

Nestled within the highly sought after Dartmouth Park Conservation Area, this charming five bedroom detached house offers a rare combination of generous lateral space, period character, and exceptional potential for enhancement.

This detached house offers off-street parking, a secluded garden, and spacious interiors spread across three floors. With wider-than-average proportions, it combines character and flexibility, making it an ideal family home.

On the ground floor are two grand reception rooms featuring bay windows, high-ceilings and original period details. The open plan kitchen and dining room serves as the heart of the home, with direct access to the garden. The ground floor also includes a guest cloakroom/WC.

On the first floor are four double bedrooms, including the principal bedroom, a family bathroom and a separate shower room. A loft conversion adds a further double bedroom with a private balcony and a luxurious bathroom.

The house occupies a fantastic position, only moments from the rolling acres of Hampstead Heath, Waterlow Park and Highgate Cemetery, with the charming street cafés of Swains Lane and Highgate Village beyond.

Features

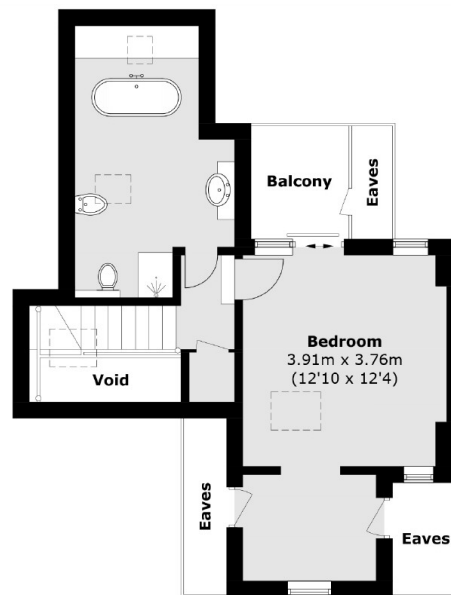
- Edwardian House
- Five Bedrooms
- Off-Street Parking
- Private Garden & Terrace
- Prime Dartmouth Park
- Private Entrance



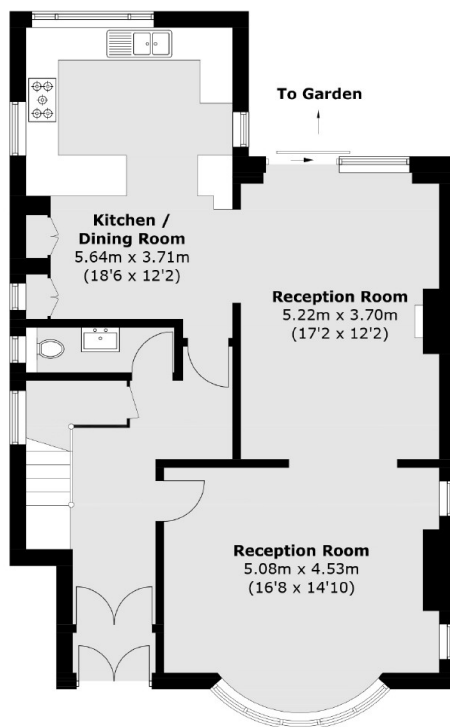




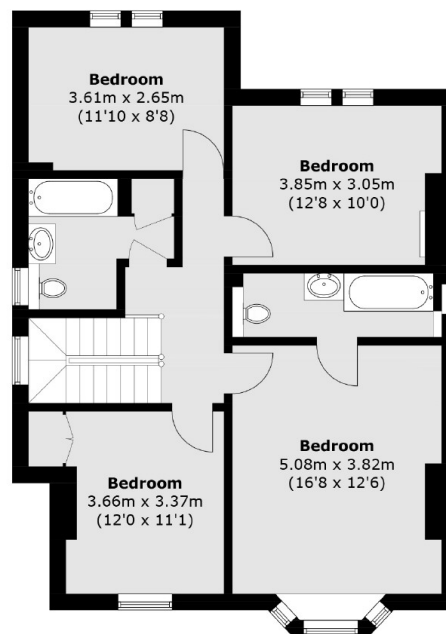
Brookfield Park, London, NW5



Second Floor



Ground Floor



First Floor

Total area (approx.): 192.0 sq. m (2,066.7 sq. ft)
Balcony : 3.8 sq. m (40.9 sq. ft)
(Excluding Eaves / Void)