



Tremlett Grove, N19

£550,000

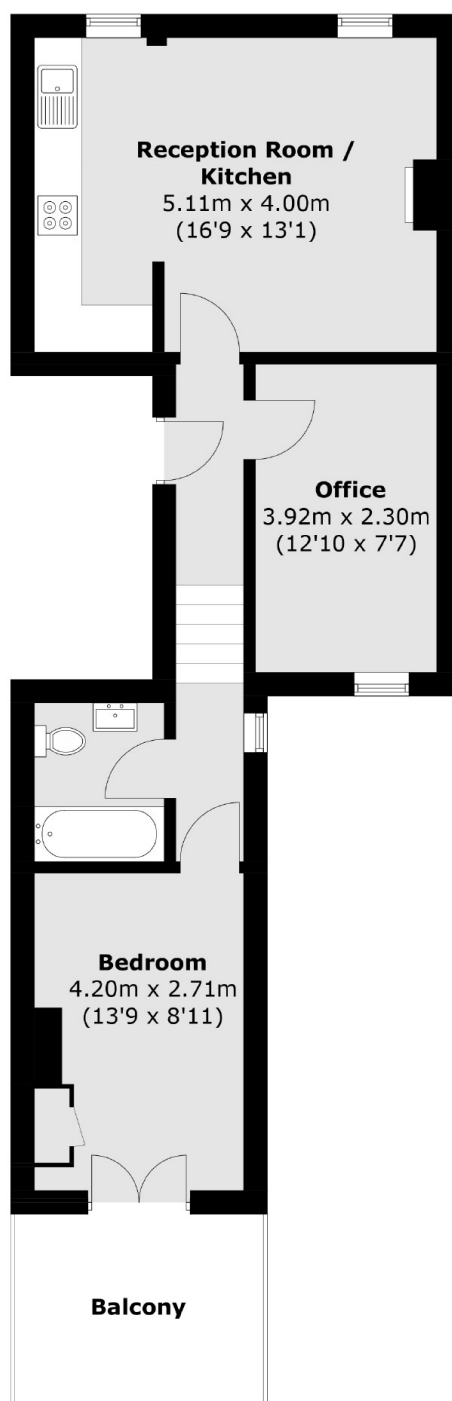
A charming and well-presented two bedroom apartment, set on the first floor of a stunning Victorian conversion. This property has an open plan reception room/kitchen, a private balcony and a family bathroom.

Tremlett Grove is centrally positioned for easy access to both Archway and Tufnell Park tube stations, the excellent range of independent retailers on Junction Road and is within walking distance of Hampstead Heath.

Features

- Two Bedrooms
- Victorian Conversion
- Great Transport Links
- Leasehold
- Private Balcony
- Well-Presented

Tremlett Grove, London, N19



Total area (approx.): 51.1 sq. m (550.0 sq. ft)
Balcony: 7.6 sq. m (81.8 sq. ft)