



Hilddrop Crescent, N7
£550,000

Dexters



Hilddrop Crescent, N7

A newly refurbished two bedroom flat, located on the second floor of this charming period conversion. The property features double glazing throughout and includes a fully fitted kitchen.

As you enter the property, you'll find two adjacent bedrooms, both offering views of the west-facing communal garden. Beyond this, you'll step into the open plan kitchen and reception area, which has been fully refurbished to a high-specification.

The property has wooden floors throughout, large windows, allowing for lots of natural light and comes with a share of the freehold.

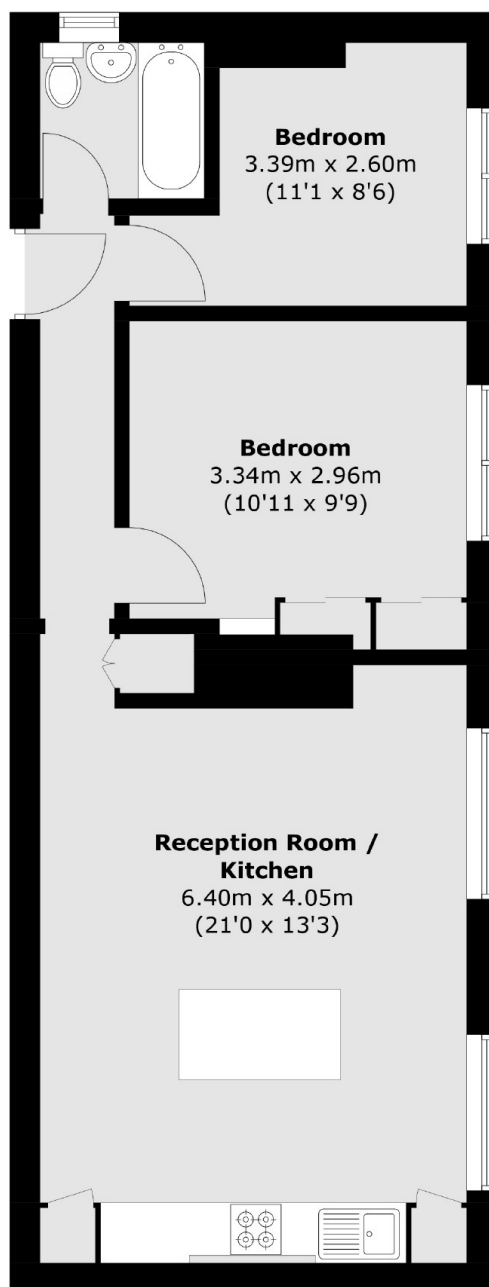
Hilddrop Crescent is a pretty tree-lined street, situated between Tufnell Park and Camden Town. The property is within a mile of both Kentish Town (Northern line) and Tufnell Park stations (Northern line).

Features

- Share of Freehold
- Newly Renovated
- Double Glazed Windows
- Period Conversation
- Chain Free
- Communal Garden



Hilldrop Crescent, London, N7



Total area (approx.): 51.4 sq. m (553.3 sq. ft)