



Annesley Walk, N19

£475,000

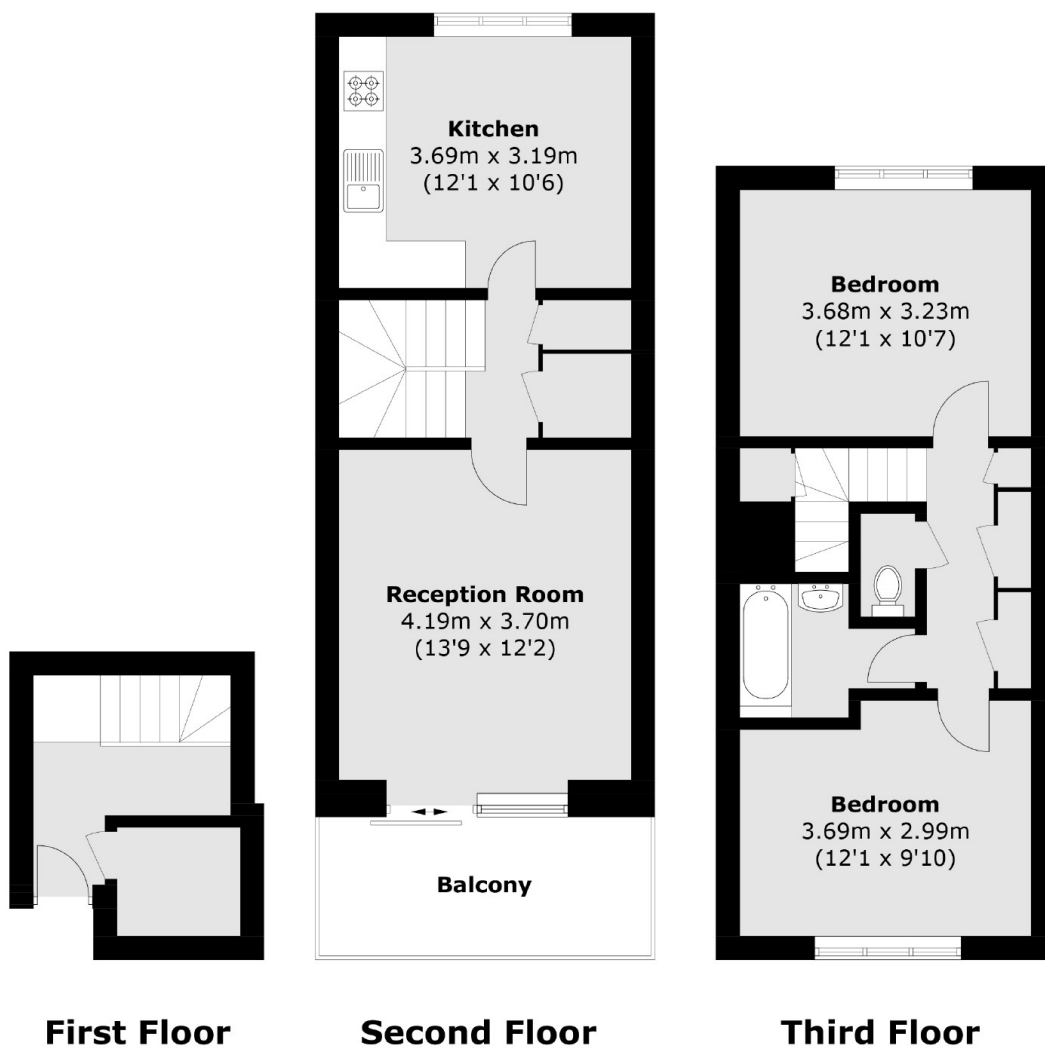
A well-presented two double bedroom duplex apartment, set in a purpose built block in the heart of Archway. This property offers a separate kitchen and reception room, which has direct access to a private balcony.

Annesley Walk is ideally located for both Archway (Northern line) and Upper Holloway (Overground) stations, as well as the numerous supermarkets, restaurants and cafés in Junction Road and Highgate Village.

Features

- Leasehold
- Private Balcony
- Chain Free
- Two Double Bedrooms
- Great Transport Links
- Split-Level

Annesley Walk, London, N19



Total area (approx.): 78.2 sq. m (841.7 sq. ft)
Balcony: 7.4 sq. m (79.6 sq. ft)

Dexters

Dartmouth Park & Tufnell Park
64 Chetwynd Road
Dartmouth Park
London
Sales
020 7284 0101

Energy Rating: C. We aim to make our particulars both accurate and reliable. However they are not guaranteed; nor do they form part of an offer or contract. If you require clarification on any points then please contact us, especially if you're traveling some distance to view. Please note that appliances and heating systems have not been tested and therefore no warranties can be given as to their good working order.

 **RICS** | Regulated
Estate Agent
and Letting Agent

dexters.co.uk