



St. John's Grove, N19

£550,000

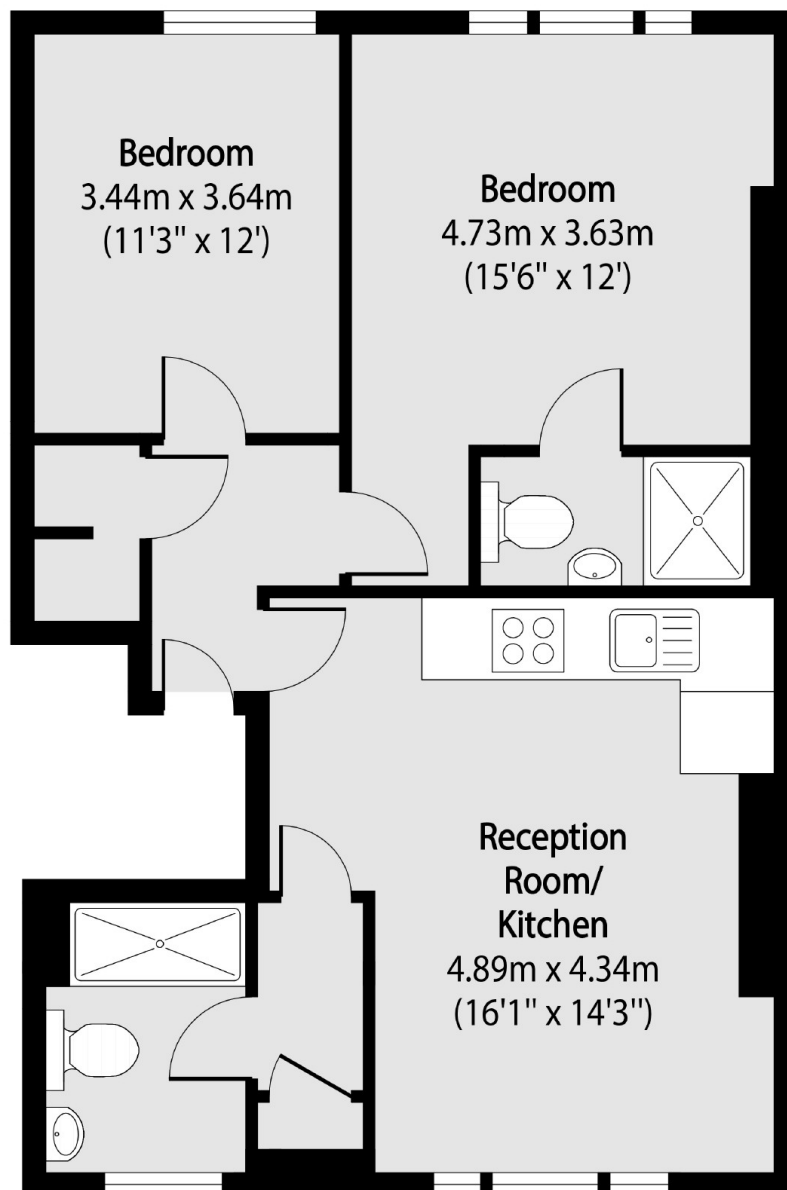
A well-presented flat on the top floor of a Victorian conversion. This property has a large reception room, an open plan kitchen, two double bedrooms (one en suite) and a separate bathroom.

Located in the heart of the St. John's Grove Conservation Area, numerous cafés, bars and shops can be found on nearby Junction Road, along with good transport links at Archway and Upper Holloway.

Features

- Two Double Bedrooms
- Great Transport Links
- Open Plan Living
- Wooden Floors
- Chain Free
- Top floor

St. John's Grove, London, N19



Total area (approx): 56.54 sq m (608 sq. ft)