



Highwood Road, N19

£675,000

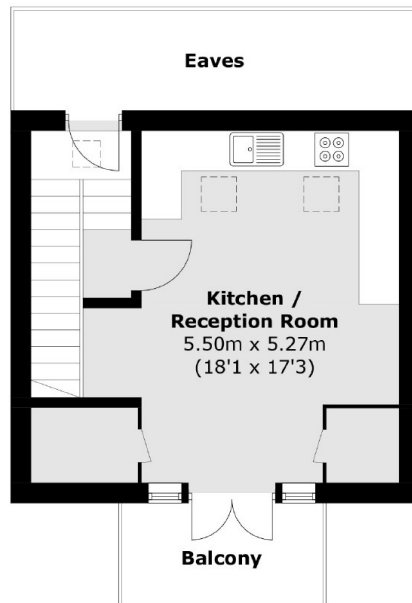
This well-presented, split-level flat is set within a terraced Victorian house. The property comprises three generously sized bedrooms, an open plan reception room/kitchen and a private balcony.

Situated within the sought after Yerbury School catchment area, Highwood Road is a hidden gem in Tufnell Park, with green spaces close by such as Whittington Park and Foxham Gardens.

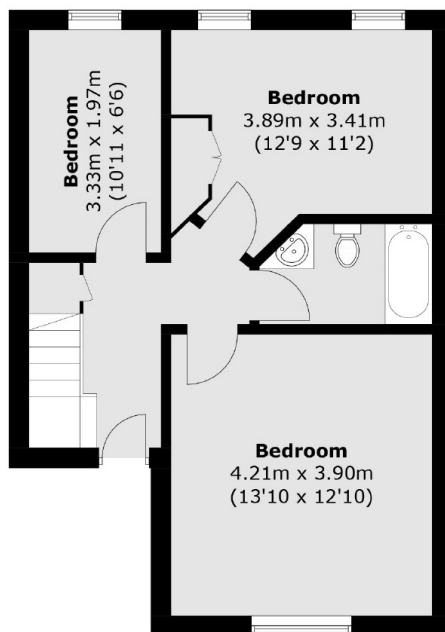
Features

- Chain Free
- Three Bedrooms
- Private Balcony
- Open Plan Reception/Kitchen
- Split-Level
- Victorian Conversion

Highwood Road, London, N19



Third Floor



Second Floor

Total area (approx.): 76.8 sq. m (826.7 sq. ft)
Balcony: 4.5 sq. m (48.4 sq. ft)
(Excluding Eaves)