



Camden Road, N7

£500,000

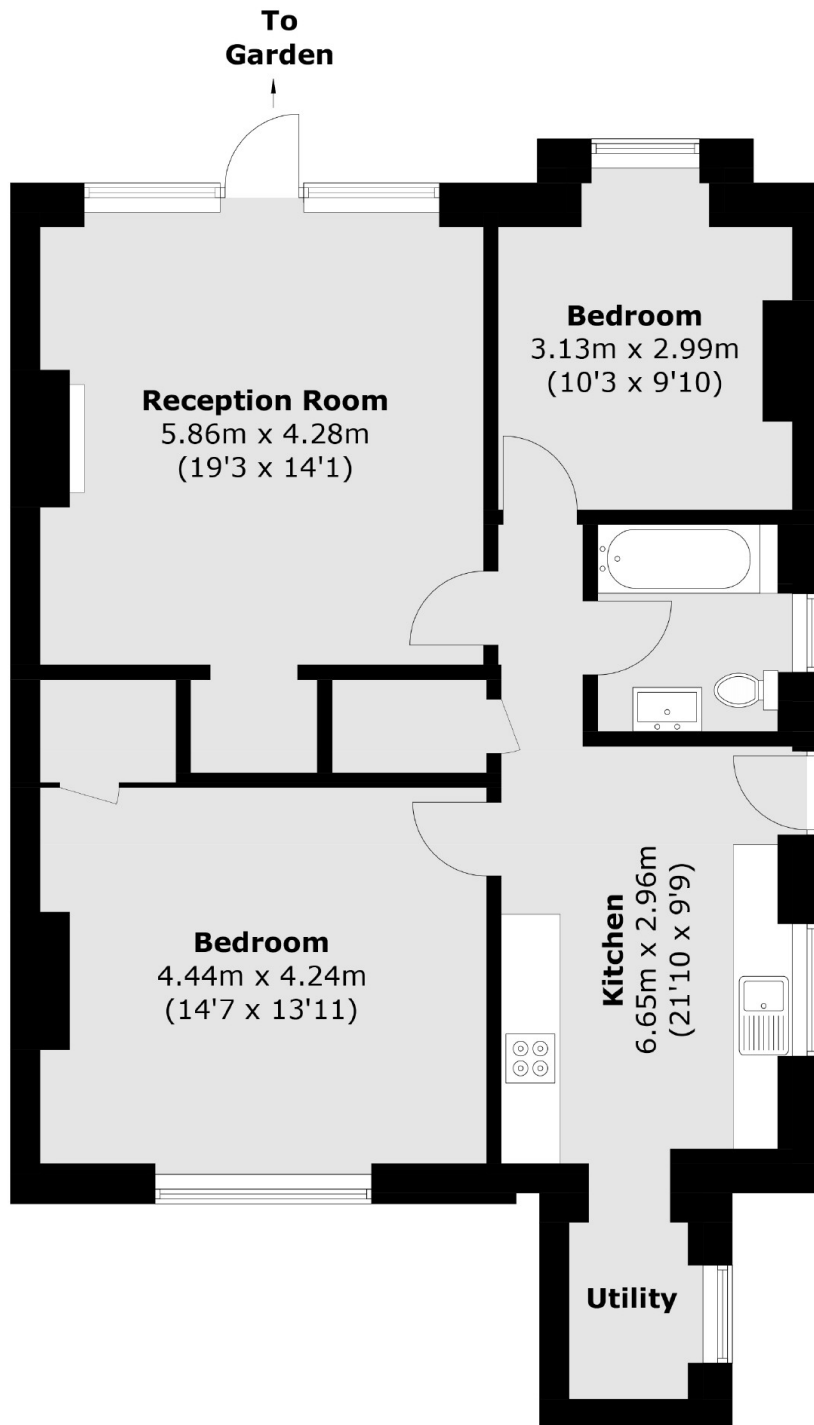
A spacious two double bedroom Victorian conversion with a private, gated entrance, a large reception room, a separate eat-in kitchen, a modern bathroom, tall ceilings, large windows and a secluded garden.

Camden Road is well-located for local amenities and numerous transport links, with Holloway Road station nearby (Piccadilly line) and also within easy reach of Kentish Town, Camden Town and Kings Cross.

Features

- Chain Free
- Victorian Conversion
- Private Garden
- Two Double Bedrooms
- Large Kitchen/Dining Area
- Private Gated Entrance

Camden Road, London, N7



Total area (approx.): 78.9 sq. m (849.3 sq. ft)

Dexters

Dartmouth Park & Tufnell Park
64 Chetwynd Road
Dartmouth Park
London
Sales
020 7284 0101

Energy Rating: C. We aim to make our particulars both accurate and reliable. However they are not guaranteed; nor do they form part of an offer or contract. If you require clarification on any points then please contact us, especially if you're traveling some distance to view. Please note that appliances and heating systems have not been tested and therefore no warranties can be given as to their good working order.

 **RICS** | Regulated
Estate Agent
and Letting Agent

[dexters.co.uk](https://www.dexters.co.uk)