



## Wedmore Gardens, N19

£1,050,000

A well-presented three bedroom Victorian terraced house, arranged over two floors on a quiet cul-de-sac. This property offers a secluded garden and potential for a loft extension, subject to planning permission.

Wedmore Gardens is a quiet residential road located close to transport links including Archway and Upper Holloway stations. Several good schools, and the green open space of Whittington Park are on your doorstep.

### Features

- Three Double Bedrooms
- Freehold House
- Underfloor Heating
- Secluded Garden
- Victorian Features
- Great Transport Links



## Wedmore Gardens, N19

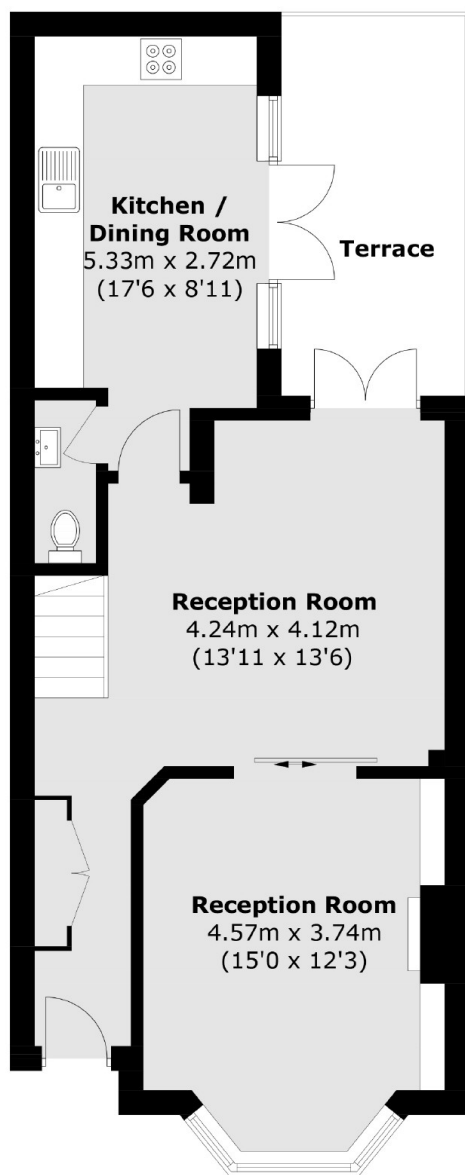
The ground floor has underfloor heating throughout and comprises a spacious double reception room, a feature fireplace, a large bay window, a separate kitchen/dining room with French doors, leading onto a secluded garden.

The first floor has three double bedrooms with fitted wardrobes, two bathrooms (one en suite) and a skylight to optimise the flow of light throughout.

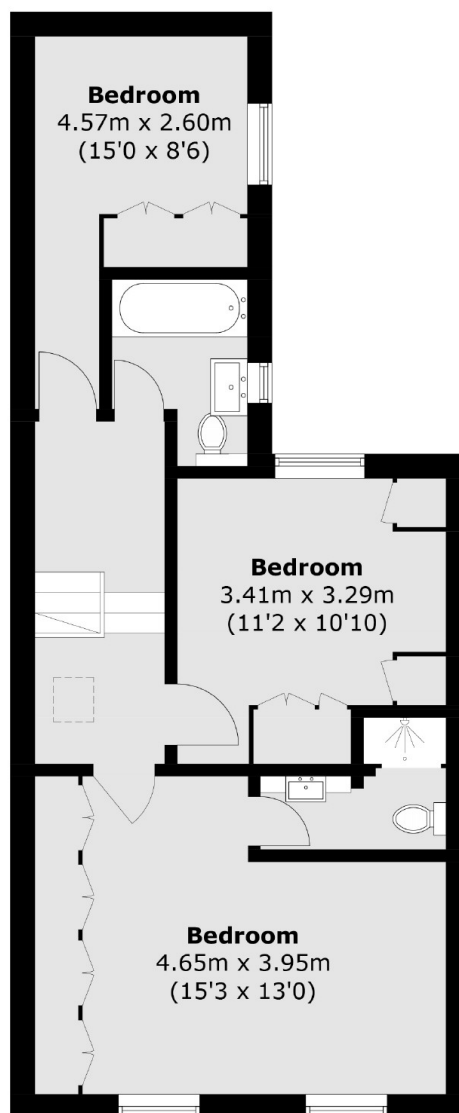




# Wedmore Gardens, London, N19



**Ground Floor**



**First Floor**

Total area (approx.): 107.4 sq. m (1,156.0 sq. ft)  
Terrace : 10.5 sq. m (113.0 sq. ft)