



Hornsey Road, N7

£450,000

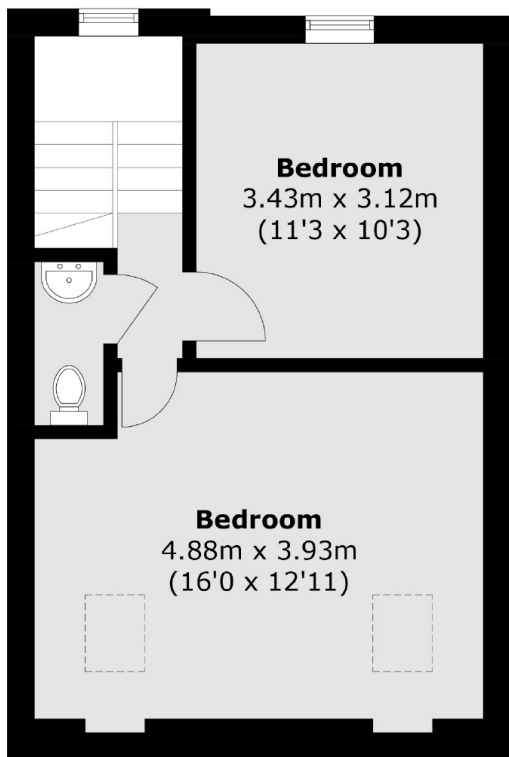
A well-presented two bedroom split-level apartment, set in a terraced Victorian building. This property offers an open plan kitchen/reception room with two large double bedrooms on the upper floor.

This property is close to both Archway tube station (Northern line) and Finsbury Park station (Victoria line) and also not far from Upper Holloway Overground, and there are plenty of amenities close to hand.

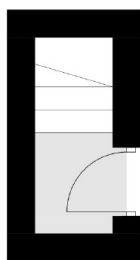
Features

- Two Bedrooms
- Top floor
- Split-Level Conversion
- Great Transport Links
- Open Plan Living
- Leasehold

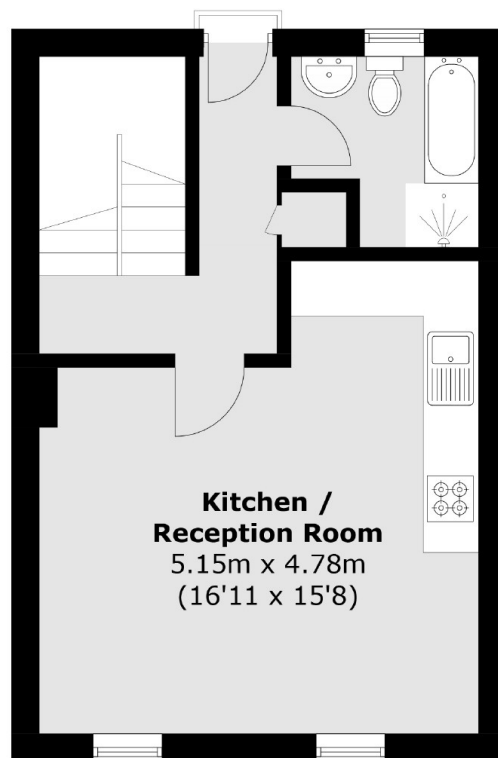
Hornsey Road, London, N7



Third Floor



First Floor



Second Floor

Total area (approx.): 74.1 sq. m (797.5 sq. ft)