



## Raydon Street, N19

### £450,000

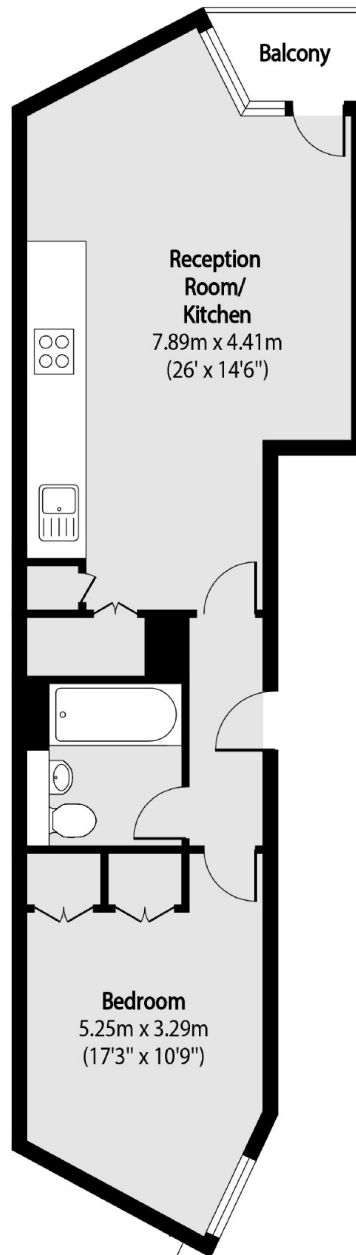
A one double bedroom apartment in an energy efficient, modern development. The apartment offers a large open plan kitchen/living space, wooden floors, a private balcony and communal gardens.

Raydon Street is ideally located moments from the independent shops and cafés on Swain's Lane. Hampstead Heath is within half a mile, as is Archway underground station (Northern line).

### Features

- Private Balcony
- Communal Courtyard Garden
- Lift Access
- Great Transport Links
- Energy Efficient
- One-Way Residential Street

# Raydon Street, London, N19



Total area (approx): 53.42 sq m (575 sq. ft)

Balcony total area (approx): 2.16 sq m (56 sq. ft)

## Dexters

Dartmouth Park & Tufnell Park  
64 Chetwynd Road  
Dartmouth Park  
London

Sales  
020 7284 0101

Energy Rating: C. We aim to make our particulars both accurate and reliable. However they are not guaranteed; nor do they form part of an offer or contract. If you require clarification on any points then please contact us, especially if you're traveling some distance to view. Please note that appliances and heating systems have not been tested and therefore no warranties can be given as to their good working order.

 **RICS** | Regulated  
Estate Agent  
and Letting Agent

[dexters.co.uk](https://www.dexters.co.uk)