



## Whewell Road, N19

£475,000

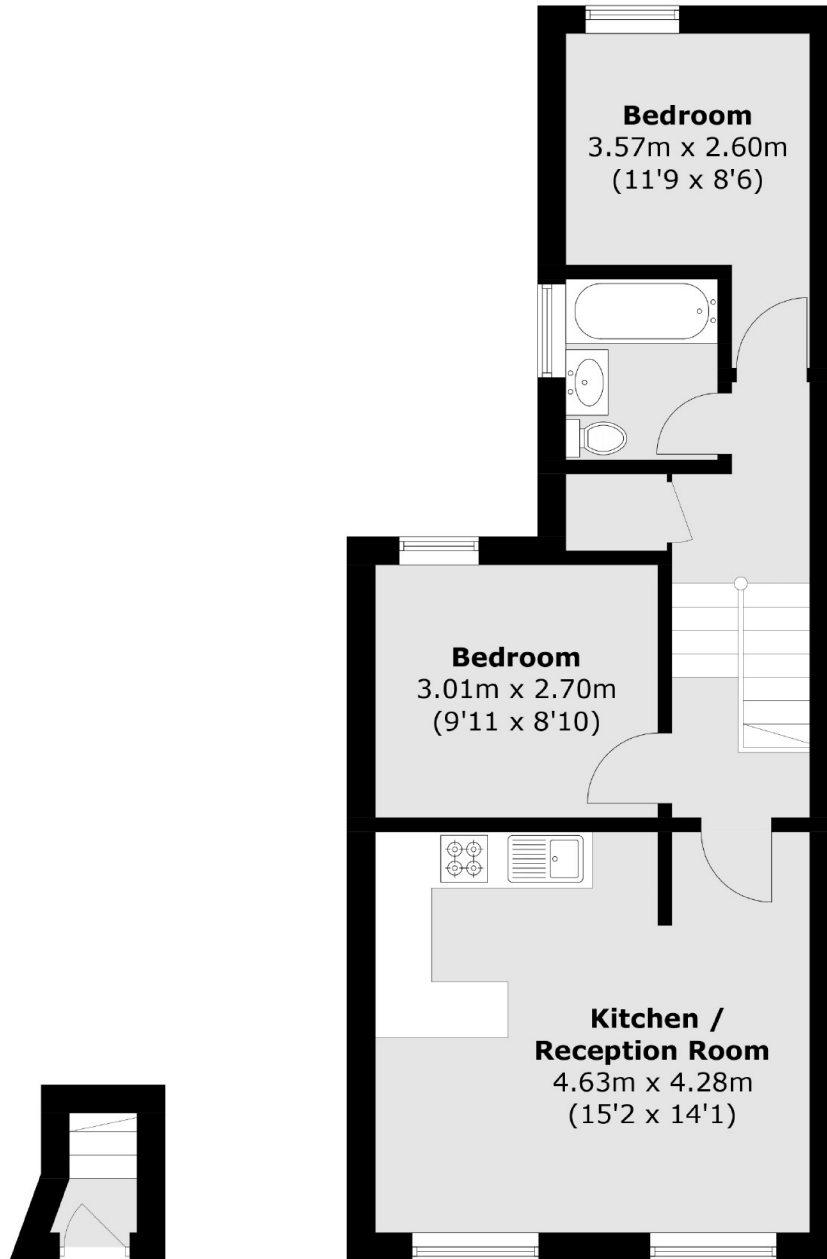
A charming two double bedroom apartment set on the first floor of a period conversion. This property has a lovely, open plan reception room/kitchen, a separate bathroom and lots of natural light throughout.

Whewell Road is located just off one of the most vibrant high streets in North London, offering a wide array of shops, cafés and restaurants. Holloway Road and Archway stations are also close by.

### Features

- Share Of Freehold
- Chain Free
- Open Plan Living
- Top Floor
- Period Conversion
- Two Bedrooms

# Whewell Road, London, N19



## Ground Floor

## First Floor

Total area (approx.): 48.8 sq. m (525.2 sq. ft)

**Dexters**

Dartmouth Park & Tufnell Park  
64 Chetwynd Road  
London  
NW5 1DE  
Sales  
020 7284 0101

Energy Rating: D. We aim to make our particulars both accurate and reliable. However they are not guaranteed; nor do they form part of an offer or contract. If you require clarification on any points then please contact us, especially if you're traveling some distance to view. Please note that appliances and heating systems have not been tested and therefore no warranties can be given as to their good working order.

 **RICS** | Regulated  
Estate Agent  
and Letting Agent

[dexters.co.uk](http://dexters.co.uk)