



Brecknock Road, N7

£800,000

A well-presented split-level Victorian conversion with a private terrace. This property has a large reception room, a separate kitchen, three double bedrooms (one en suite) and a separate bathroom.

Brecknock Road is close to a variety of local independent shops and eateries, as well as Kentish Town station (Northern line and Thameslink) and Tufnell Park station (Northern line).

Features

- Share of Freehold
- Three Bedrooms
- Great Transport Links
- Victorian Conversion
- Private Terrace
- Private Entrance



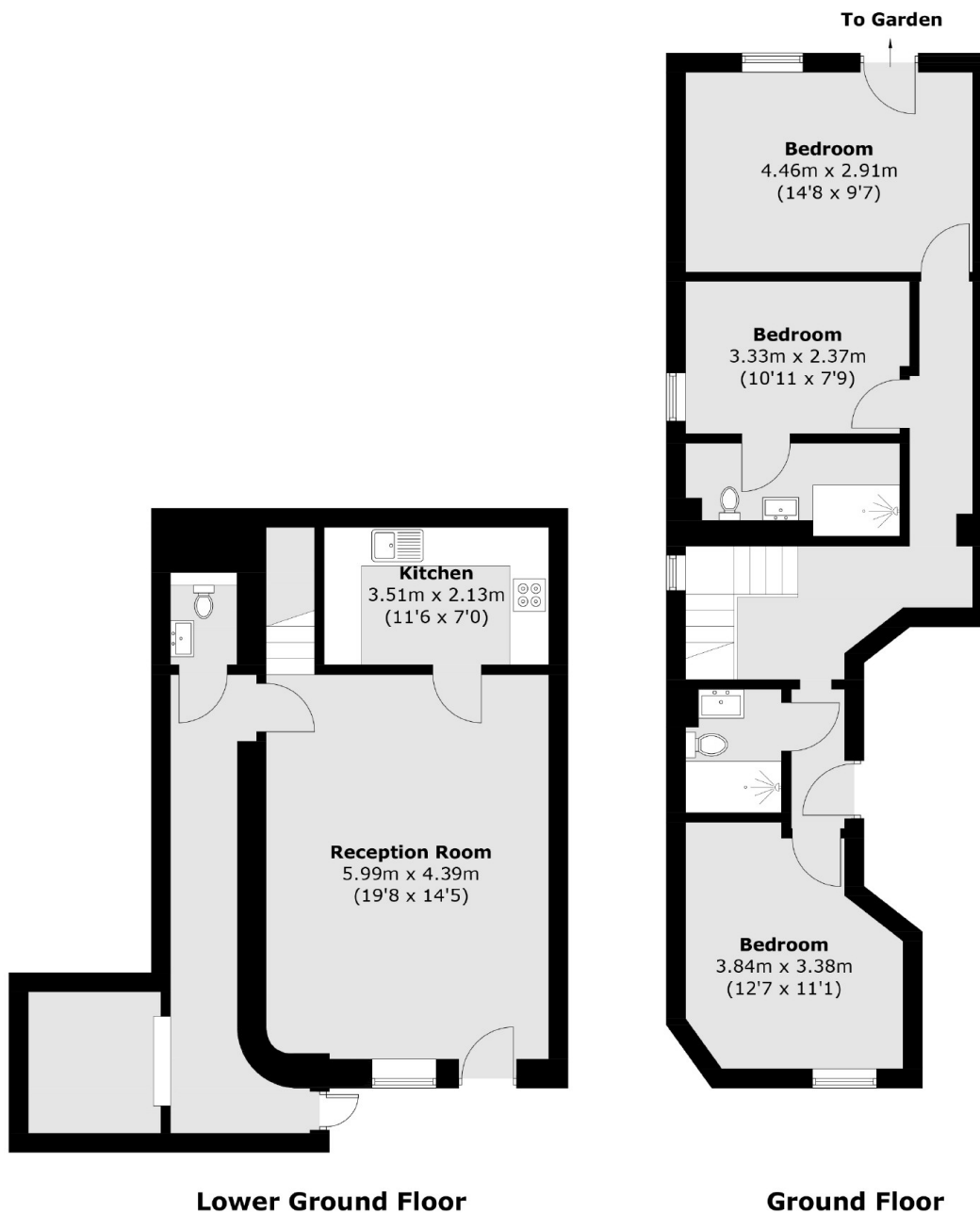
Brecknock Road, N7

You enter the property on the lower ground floor into a large reception room with wood flooring. The reception room leads into the recently renovated kitchen, and also on this floor is access to a grand enclave that serves as an entertainment space. This area has been fully renovated and includes a separate lavatory for convenience.

The ground floor features three double bedrooms, one of which is en suite. The third bedroom opens onto a private, decked terrace, providing outdoor space.



Brecknock Road, London, N7



Total area (approx.): 112.8 sq. m (1,214.1 sq. ft)