



## Charles Street, N19

£350,000

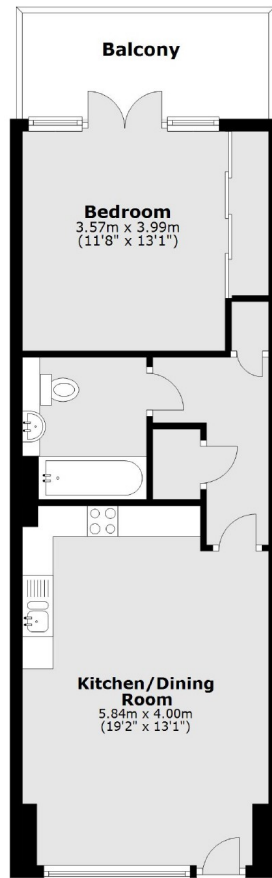
A modern warehouse conversion with its own secluded patio garden. This one bedroom apartment offers a spacious open plan living area, modern appliances, a three piece bathroom suite and secure bike storage.

The development is located close to excellent transport links, including Archway (Northern line) and Crouch Hill (Overground) stations. Local shops and cafés can be found on nearby Hornsey Road.

### Features

- Excellent Location
- Modern Fittings
- Outside Space
- Wooden Floors
- Warehouse Conversion
- Great Transport Links

# Charles Street, London, N19



Main area: Approx. 47.7 sq. metres (513.0 sq. feet)  
Plus balconies, approx. 7.3 sq. metres (78.5 sq. feet)