



Tufnell Park Road, N7

£700,000

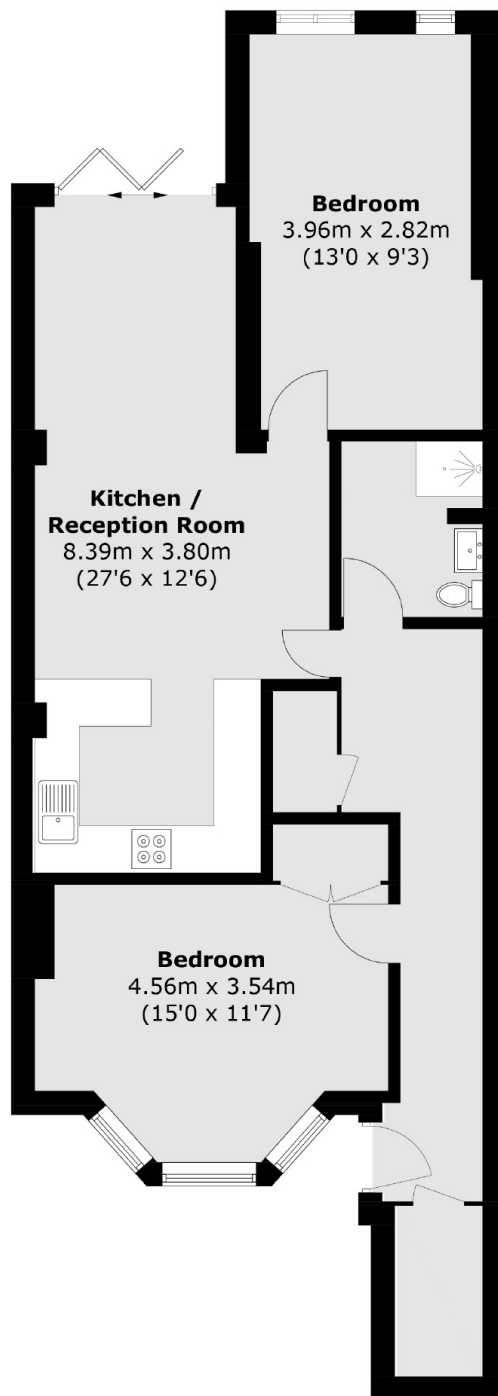
A very well-presented two double bedroom apartment in a Victorian terraced house. This property offers a large reception room and kitchen area, one bathroom, and a secluded, south east facing garden.

Located in the heart of Tufnell Park and close to the many shops, restaurants and cafés on both Fortess Road and Holloway Road. Tufnell Park underground station (Northern line) is at the end of the road.

Features

- Private Entrance
- Share of Freehold
- Two Bedrooms
- Private Garden
- Victorian Conversion
- Great Transport Links

Tufnell Park Road, London, N7



Total area (approx.): 77.4 sq. m (833.1 sq. ft)