



Anson Road, N7

£525,000

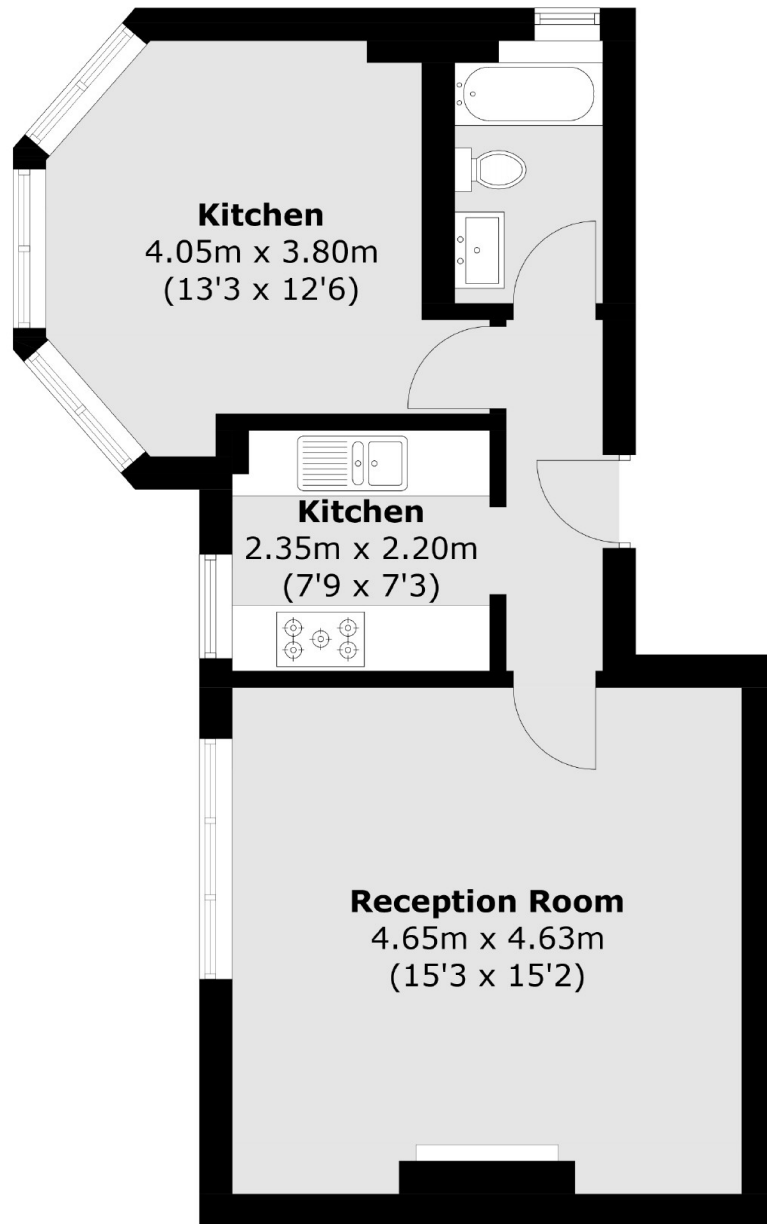
A spacious one double bedroom flat, set across the first floor of a double fronted house. The property offers a large reception room, a separate kitchen, wooden floors throughout and a shared garden.

Anson Road is a sought after tree-lined road within half a mile of Tufnell Park tube (Northern line), and within a mile of Kentish Town station (Northern line & Thameslink) and Caledonian Road tube (Piccadilly line).

Features

- Share of Freehold
- Period Conversion
- Shared Garden
- Wooden Floors
- Separate Kitchen
- Premium Road

Anson Road, London, N7



Total area (approx.): 47.0 sq. m (505.9 sq. ft)