



Chester Road, N19

£750,000

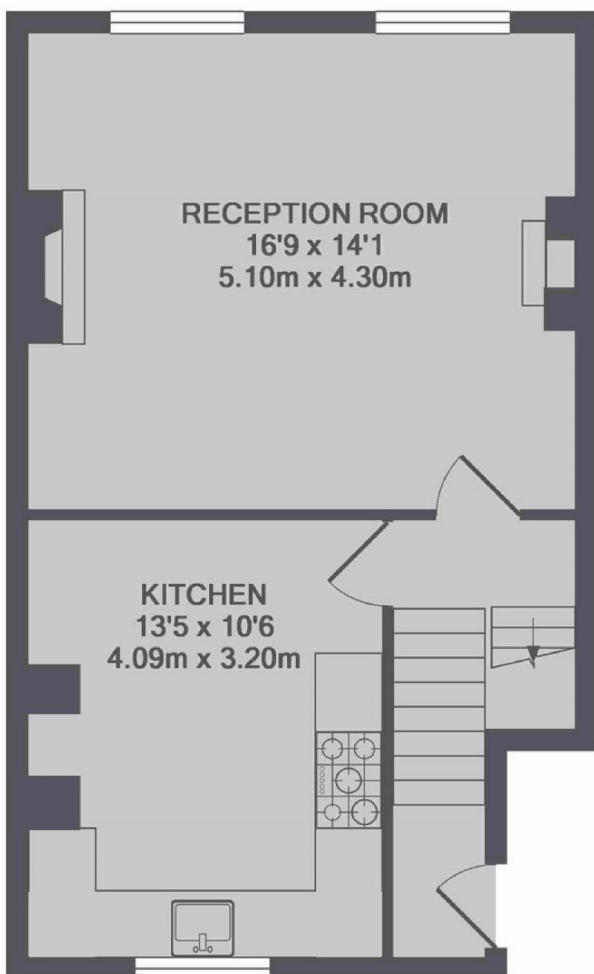
A lovely two double bedroom split-level apartment with a large reception room, a separate kitchen and a new bathroom. This property has been recently refurbished to an impeccable standard throughout.

Chester Road is ideally placed within easy reach of Hampstead Heath, Waterlow Park, the local shops and cafés of Swain's Lane, and is equidistant from Tufnell Park and Archway underground stations.

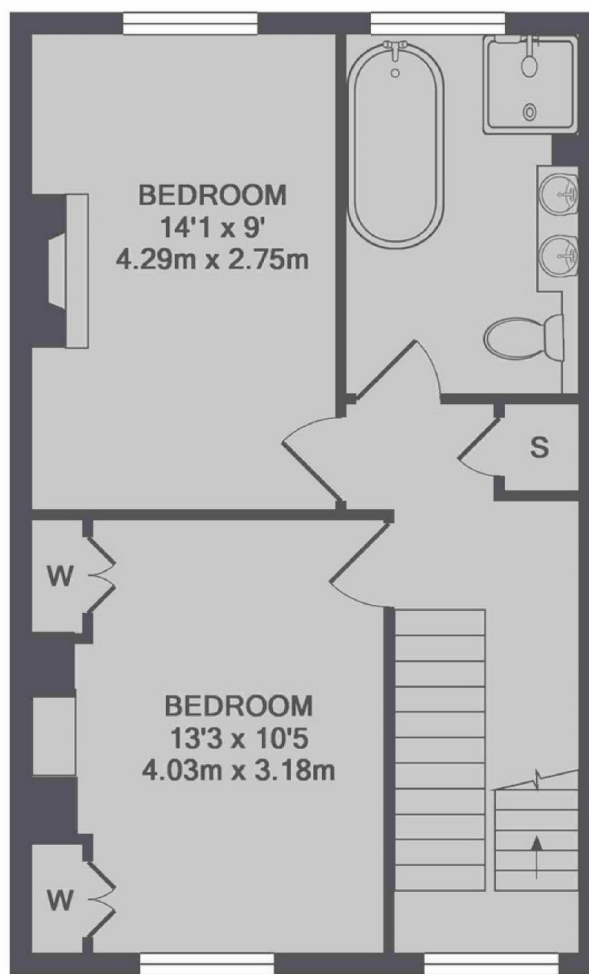
Features

- Two Bedrooms
- Large Reception Room
- Separate Kitchen
- Excellent Transport Links
- Wooden Floors
- Split-Level

Chester Road, London, N19



1ST FLOOR



2ND FLOOR

TOTAL APPROX. FLOOR AREA 912 SQ.FT. (84.7 SQ.M.)