

Chetwynd Road, NW5

£425,000

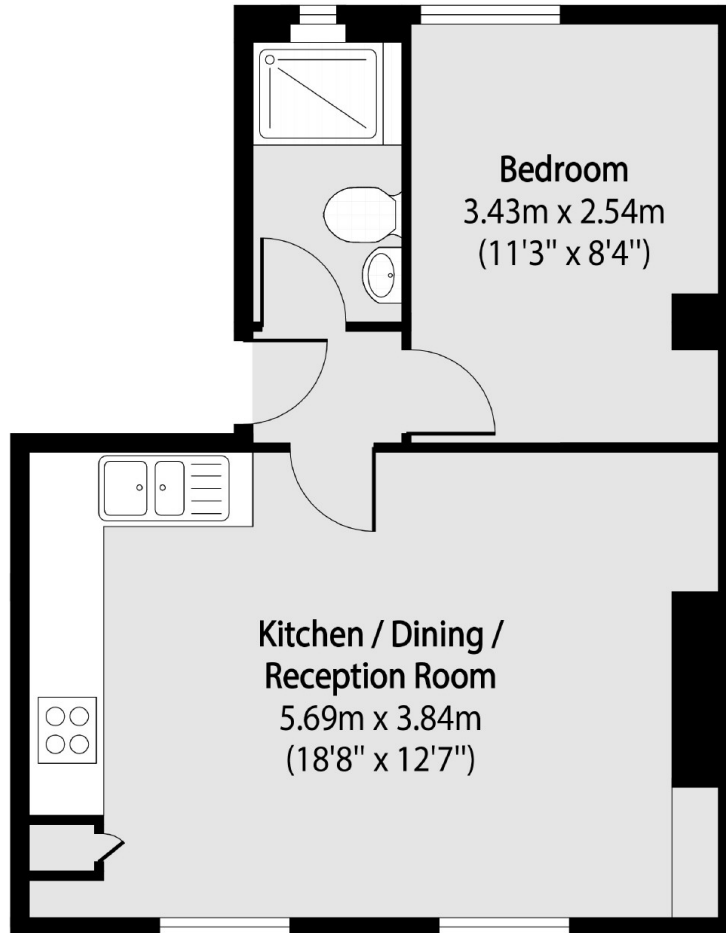
A well-presented one-bedroom flat on the first floor of a Victorian conversion. This property offers a spacious open plan reception room/kitchen with large shuttered windows, allowing for lots of natural light.

Chetwynd Road is located only moments from Hampstead Heath. Transport links can be found close by at Tufnell Park underground station (Northern line) and Gospel Oak (Overground) station.

Features

- Share of Freehold
- One Bedroom
- Victorian Conversion
- First Floor
- Excellent Location
- Open Plan Living

Chetwynd Road, London, NW5



Total area (approx): 34.56 sq m (372 sq. ft)