



## Axminster Road, N7

£650,000

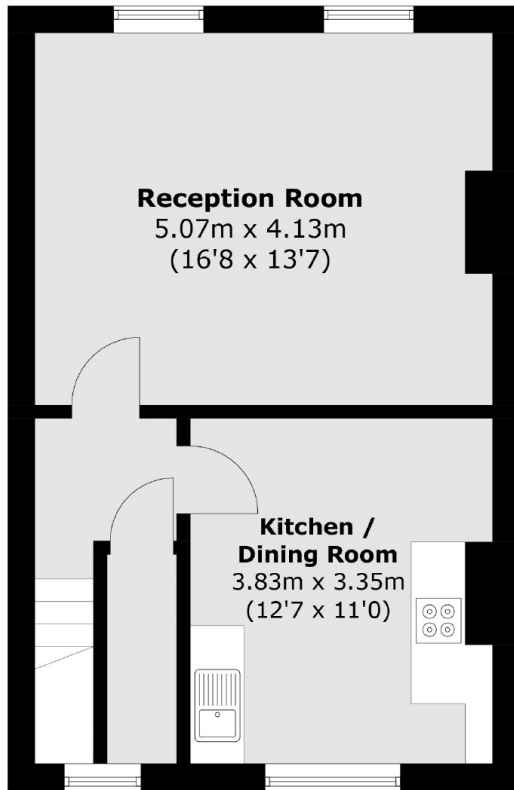
A two double bedroom upper maisonette, set over the first and second floors of an end of terrace Victorian house. This split-level property has a large reception room, a separate kitchen and period features throughout.

Axminster Road is a charming tree-lined road located close to Grafton Primary School (rated outstanding), a number of good transport links and the green open space of Whittington Park.

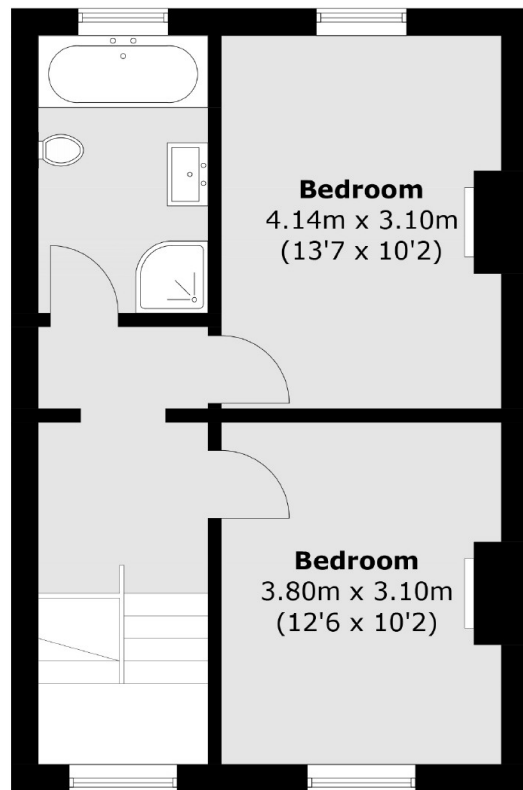
### Features

- Victorian Conversion
- End of Terrace
- Wooden Floors
- Split-Level
- Share of Freehold
- Residential Road

# Axminster Road, London, N7



**First Floor**



**Second Floor**

Total area (approx.): 80.0 sq. m (861.1 sq. ft)