



Axminster Road, N7

£650,000

A charming Victorian conversion, offering a blend of period character and modern living. This property features two spacious double bedrooms, stylish wooden floors throughout and a private garden.

Axminster Road is a tree-lined road located close to Grafton Primary School (rated outstanding), a number of good transport links and the green open space of Whittington Park.

Features

- Victorian Conversion
- Private Garden
- Two Double Bedrooms
- Wooden Floors
- Share of Freehold
- Residential Road



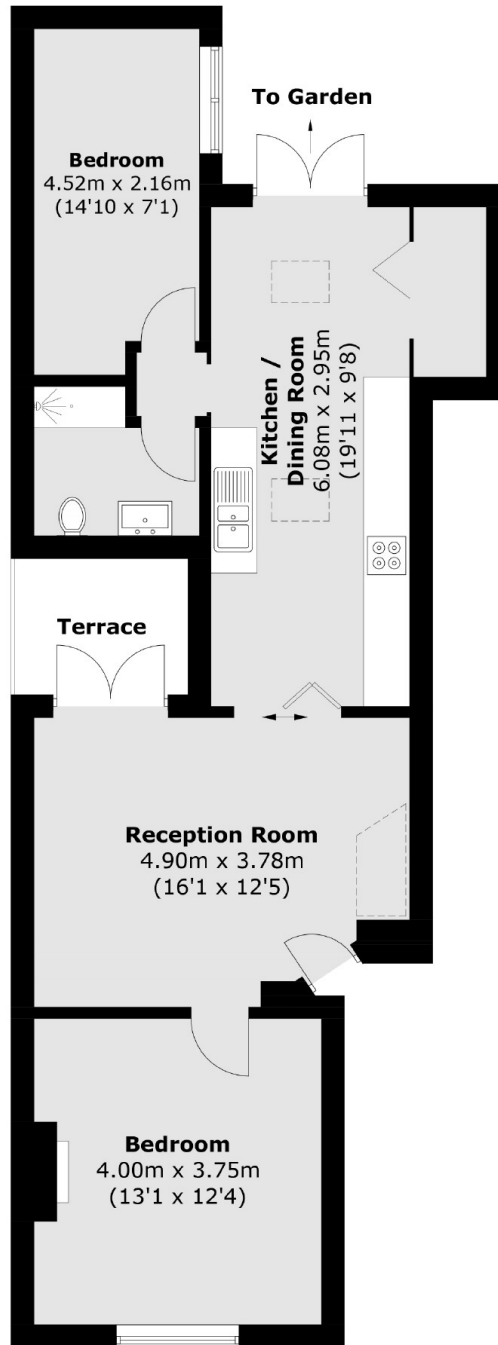
Axminster Road, N7

On entering the property, you're welcomed by a spacious reception room with natural wood flooring and doors leading out to a private terrace. The newly renovated kitchen is bathed in light, and has a separate dining area which leads out to the private garden, creating a perfect space for indoor-outdoor living.

This property boasts two good sized, double bedrooms with lots of additional storage space throughout the flat.



Axminster Road, London, N7



Total area (approx.): 67.8 sq. m (729.8 sq. ft)
Terrace : 4.0 sq. m (43.0 sq. ft)