

Carleton Road, N7

£325,000

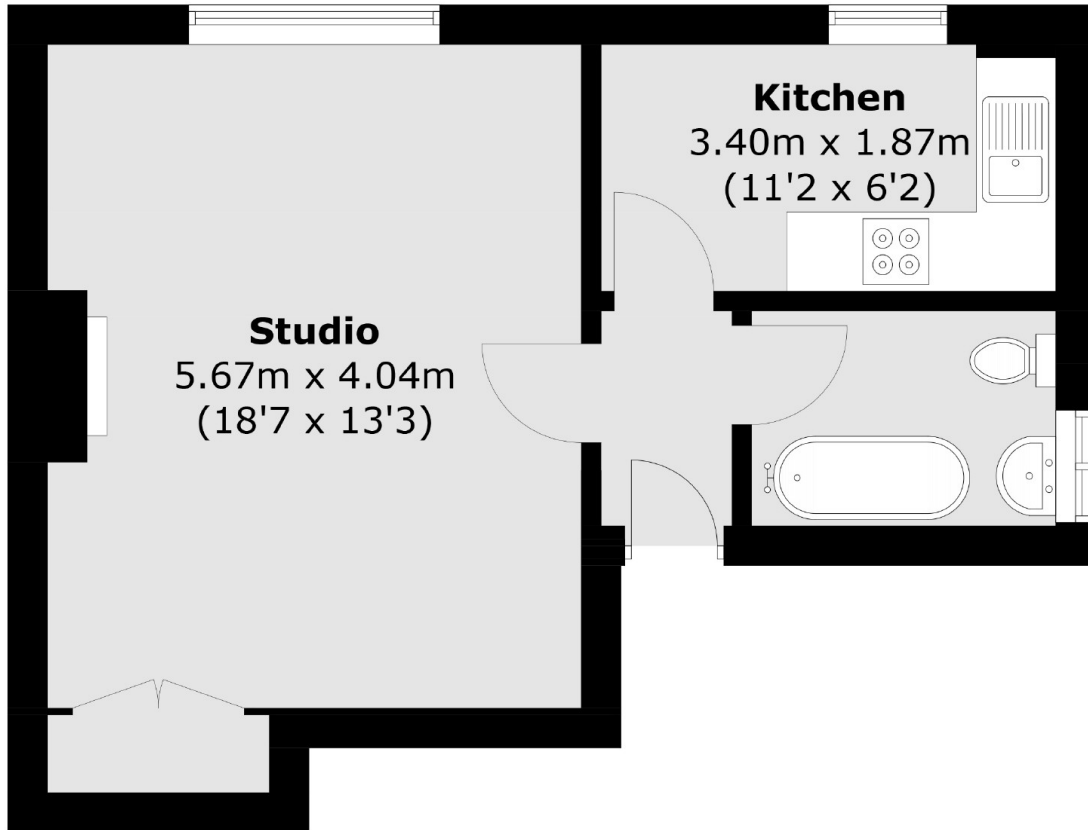
Perfect for first time buyers is this beautifully presented studio apartment, situated on the second floor of a semi-detached house in Tufnell Park. This property has a separate kitchen and access to a large shared garden.

Carleton Road is ideally placed for transport links and local shops. Tufnell Park, Kentish Town and Caledonian Road stations are within a mile, as are Tufnell Park playing fields and Hampstead Heath.

Features

- Studio
- Share of Freehold
- Shared Garden
- Period Conversion
- Separate Kitchen
- Great Transport Links

Carleton Road, London, N7



Total area (approx.): 34.6 sq. m (372.4 sq. ft)