

Kingsdown Road, N19

£450,000

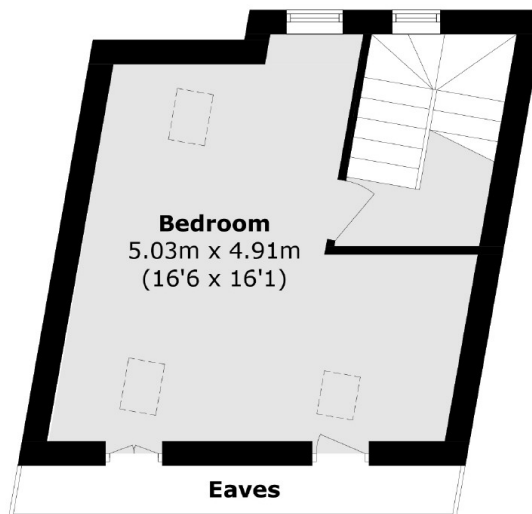
A two double bedroom split-level apartment, set across the upper levels of a Victorian house. This property has an open plan reception room/kitchen, a separate bathroom and storage space in the eaves.

Kingsdown Road is a quiet residential road and is close to Archway underground station (Northern line), as well as a wide variety of shops, cafés and restaurants on nearby Holloway Road.

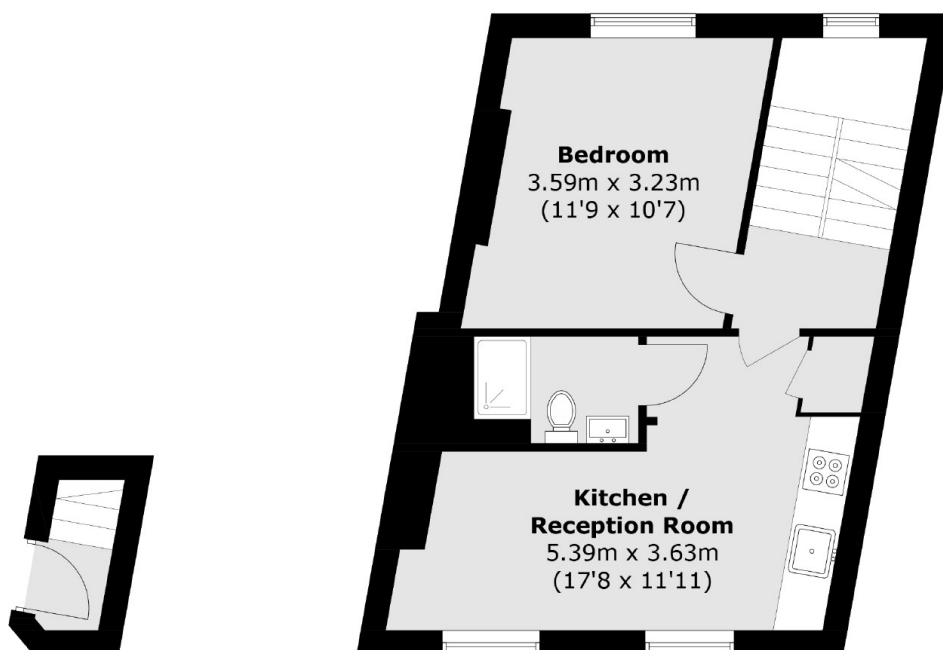
Features

- Two Double Bedrooms
- New Wood Flooring
- Open Plan Kitchen
- Residential Street
- Split-Level
- Share of Freehold

Kingsdown Road, London, N19



Fourth Floor



Second Floor

Third Floor

Total area (approx.): 64.3 sq. m (692.1 sq. ft)