



## Mayton Street, N7

£1,200,000

A four bedroom Victorian house, arranged over four floors and ideally located on a highly sought after residential street. This property has lots of character, offering high ceilings and period features throughout.

Mayton Street is situated between Holloway station (Piccadilly line), Arsenal station (Piccadilly line) and is close to the numerous amenities on Holloway Road, as well as Grafton Primary School (Rated Outstanding).

### Features

- Four Bedrooms
- Double Reception Room
- Private Garden
- Outbuilding
- Three Bathrooms
- Freehold



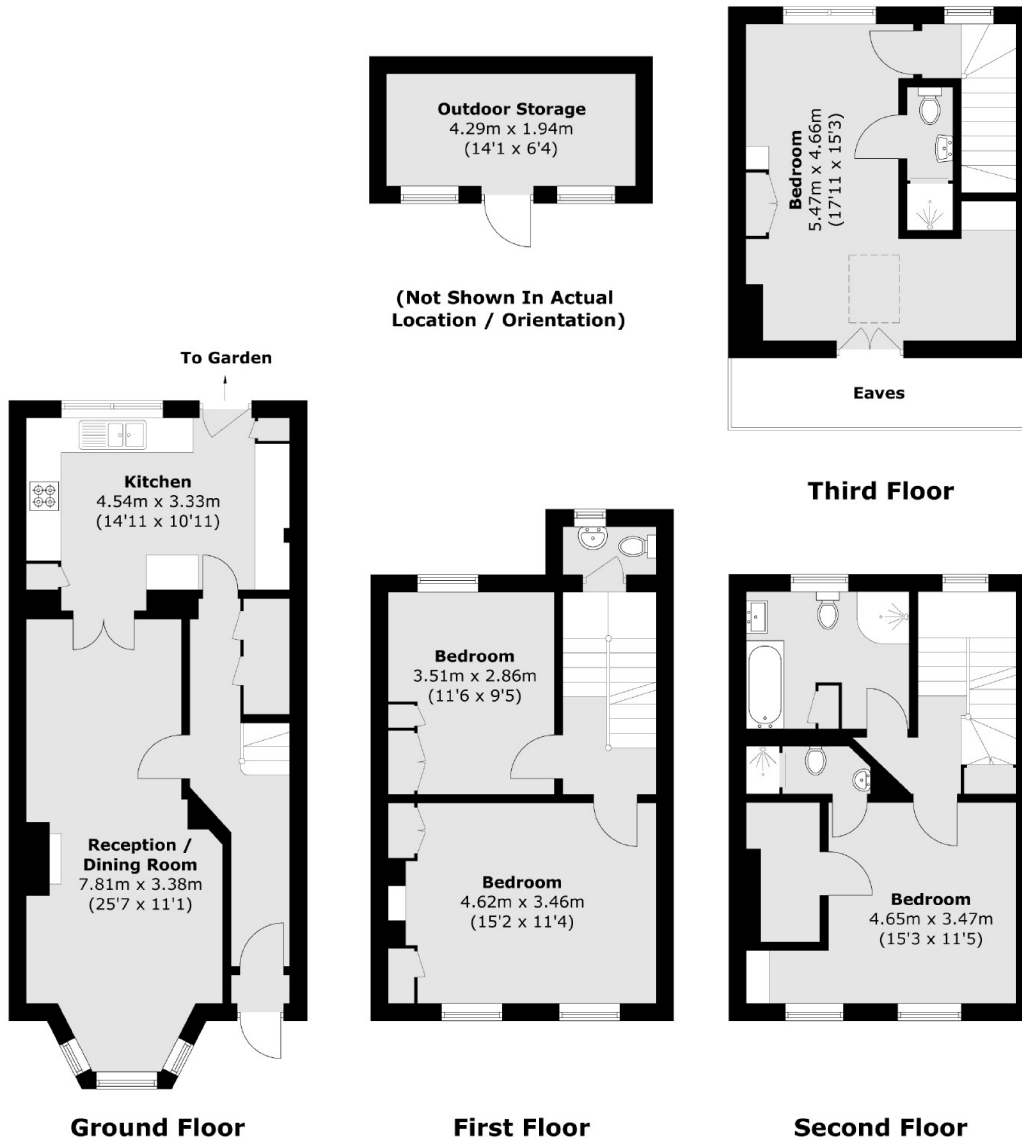
## Mayton Street, N7

As you enter the property at ground level, on your left is a double reception room allowing lots of natural light through the front bay window. This open plan layout continues into the kitchen/diner, which then leads onto a sizeable patio garden. This property also has an outbuilding in the garden which is currently used as a storage space.

On the first floor are two double bedrooms, all of which are sizable with large windows, and there is also a separate WC on this floor. The second floor has a large en suite principal bedroom and a family bathroom, and the third and final floor has a further double bedroom and ample storage space in the eaves.



# Mayton Street, London, N7



Total area (approx.): 141.6 sq. m (1,524.1 sq. ft)  
Outdoor Storage: 8.4 sq. m (90.4 sq. ft)  
(Excluding Eaves)