



Wedmore Gardens, N19

£1,000,000

A well-presented three bedroom Victorian terraced house arranged over two floors on a quiet cul-de-sac. This property offers a secluded garden and potential for a loft extension, subject to planning permission.

Wedmore Gardens is a quiet residential road located close to multiple transport links including Archway and Upper Holloway stations, several good schools, and the green open space of Whittington Park is on your doorstep.

Features

- Three Double Bedrooms
- Freehold House
- Secluded Garden
- Victorian Features
- Great Transport Links
- Chain Free



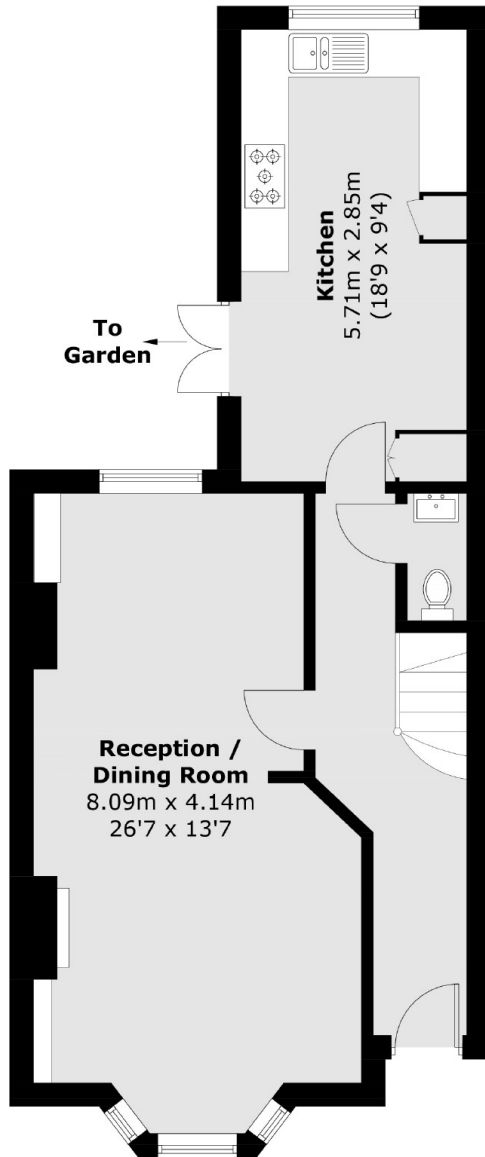
Wedmore Gardens, N19

The ground floor features a spacious double reception room with a dining area, a feature fireplace and a large bay window, and further down the hallway is a separate kitchen with doors leading onto a secluded garden.

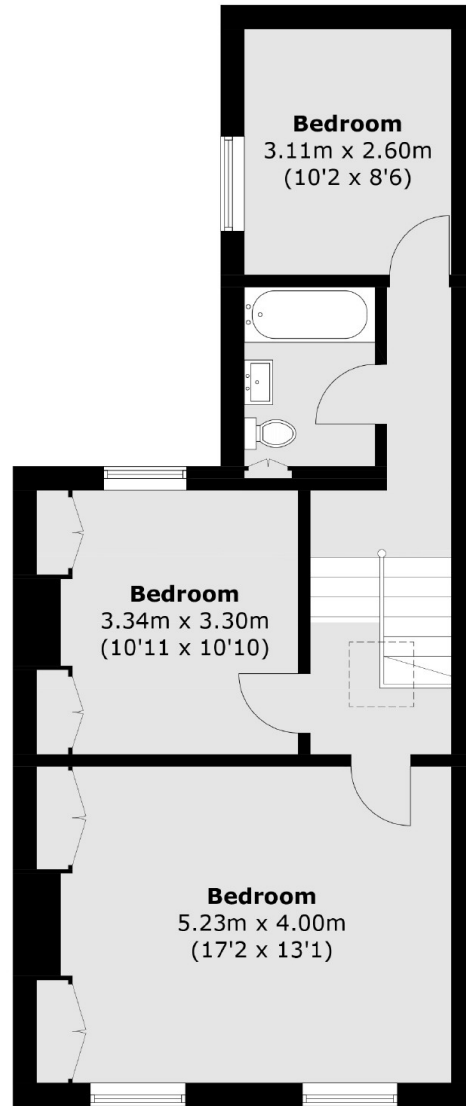
The first floor has three double bedrooms and a family bathroom. The principal bedroom benefits from double aspect windows that allow for natural light to flow throughout the room.



Wedmore Gardens, London, N19



Ground Floor



First Floor

Total area (approx.): 112.4 sq. m (1,209.8 sq. ft)