



Empire Square, N7

£750,000

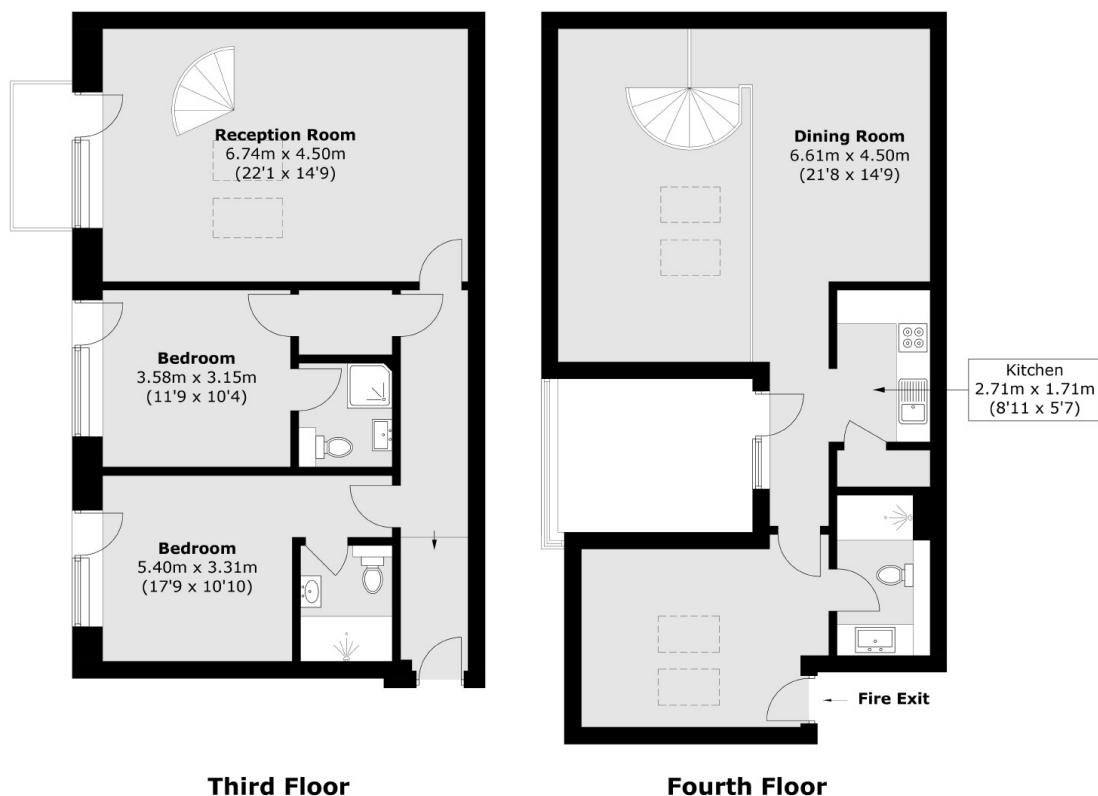
Situated on the third and fourth floor of a contemporary block, this property offers three double bedrooms, a large split-level living area with a separate kitchen and a secluded terrace.

Located close to Whittington Park and within a mile of Tufnell Park station (Northern line) and Holloway Road station (Piccadilly line). Local bus access can also be found on Holloway Road.

Features

- Gated Development
- Great Transport Links
- Chain Free
- Three Double Bedrooms
- Private Terrace
- Split-Level

Empire Square, London, N7



Total area (approx.): 141.3 sq. m (1,521.0 sq. ft)