



## St. John's Grove, N19

£700,000

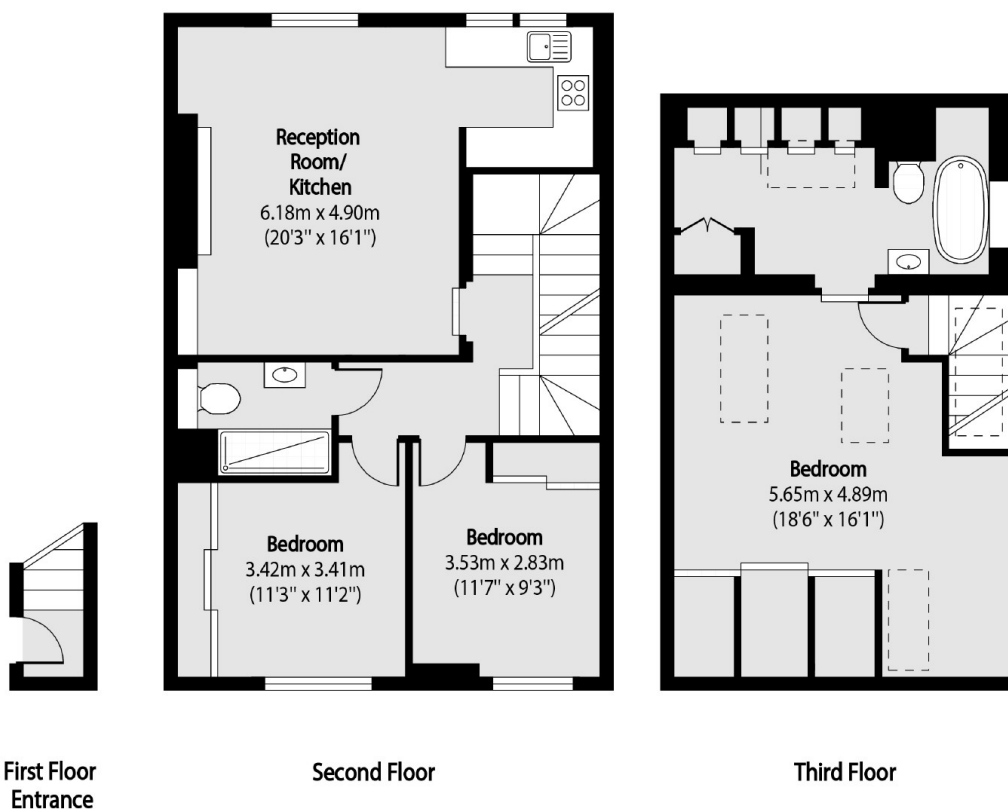
A well-presented flat on the upper floors of a Victorian conversion. This property has a large reception room, an open plan kitchen, three double bedrooms (one en suite) and a separate bathroom.

Located in the heart of the St. John's Grove Conservation Area, numerous cafés, bars and shops can be found on nearby Junction Road, along with good transport links at Archway and Upper Holloway.

### Features

- Three Double Bedrooms
- Share of Freehold
- Water Softener
- Great Transport Links
- Open Plan Living
- Wooden Floors

# St. John's Grove, London, N19



Total area (approx): 104.23 sq m (1122 sq. ft)