



Bramshill Gardens, NW5

£2,300,000

Dexters



Bramshill Gardens, NW5

An attractive three storey Victorian family house in Dartmouth Park. This house features a large reception room with a bright, open plan kitchen/dining room that looks onto a well-presented, private garden.

This Victorian terraced house includes a wonderful ground floor double reception room with high-ceilings and period features. Arriving into the kitchen, this area consists of a glass side extension with bi-fold doors leading to the south east facing garden. This floor also has the entrance to the cellar, great for an extra storage space or utility area.

Onto the first floor you have two double bedrooms, the primary suite comprised of a double bedroom, a walk-in wardrobe and en suite, as well as a further double bedroom encompassing period features, with wooden shutters, high-ceilings and feature fireplaces present.

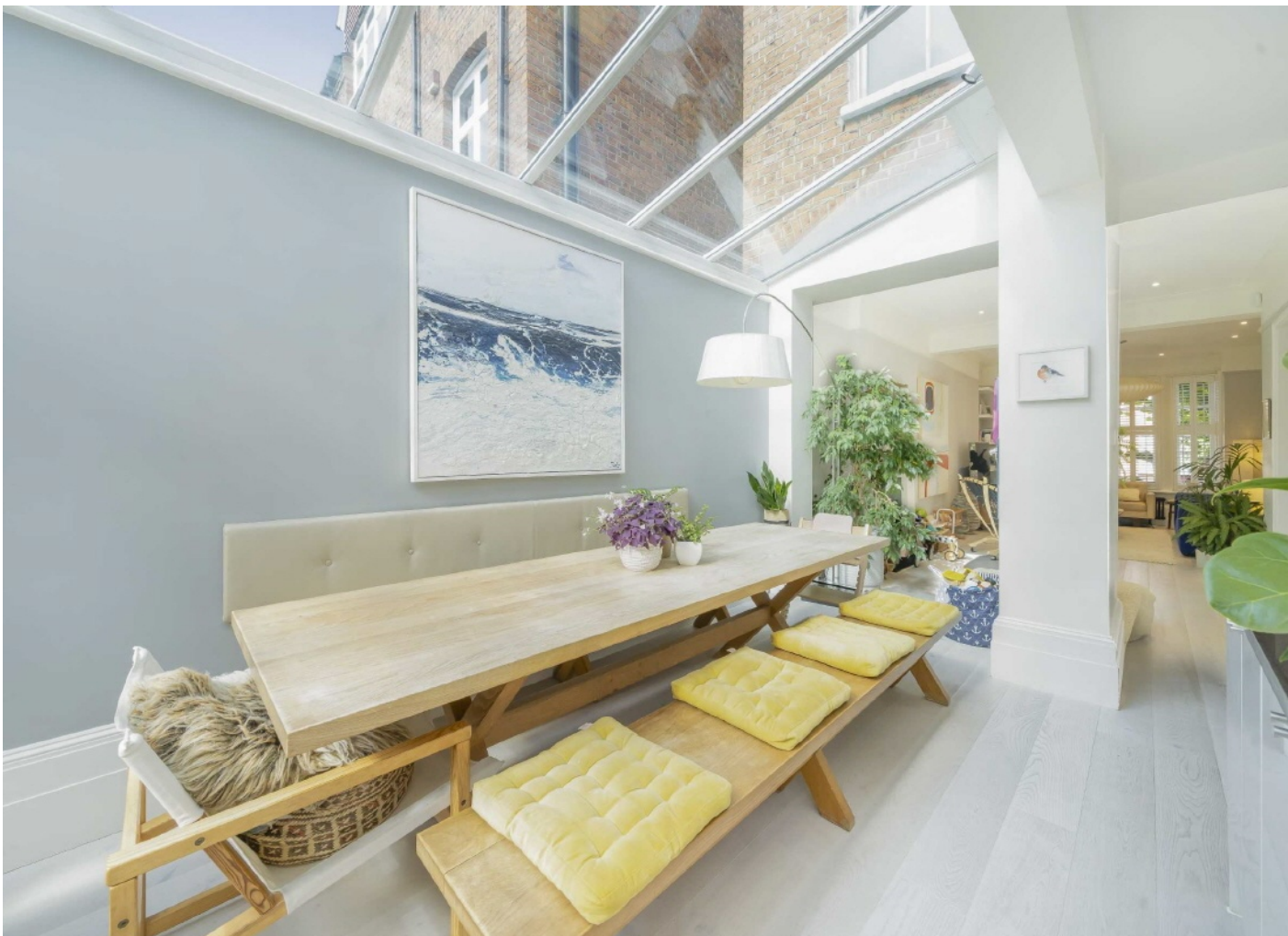
The second floor also retains many period features along with two further bedrooms and another bathroom. A loft space is also situated on this floor.

Bramshill Gardens is superbly positioned for the rolling acres of Hampstead Heath, the local shopping facilities and street cafés of York Rise and Swains Lane, and Tufnell Park tube station.

Features

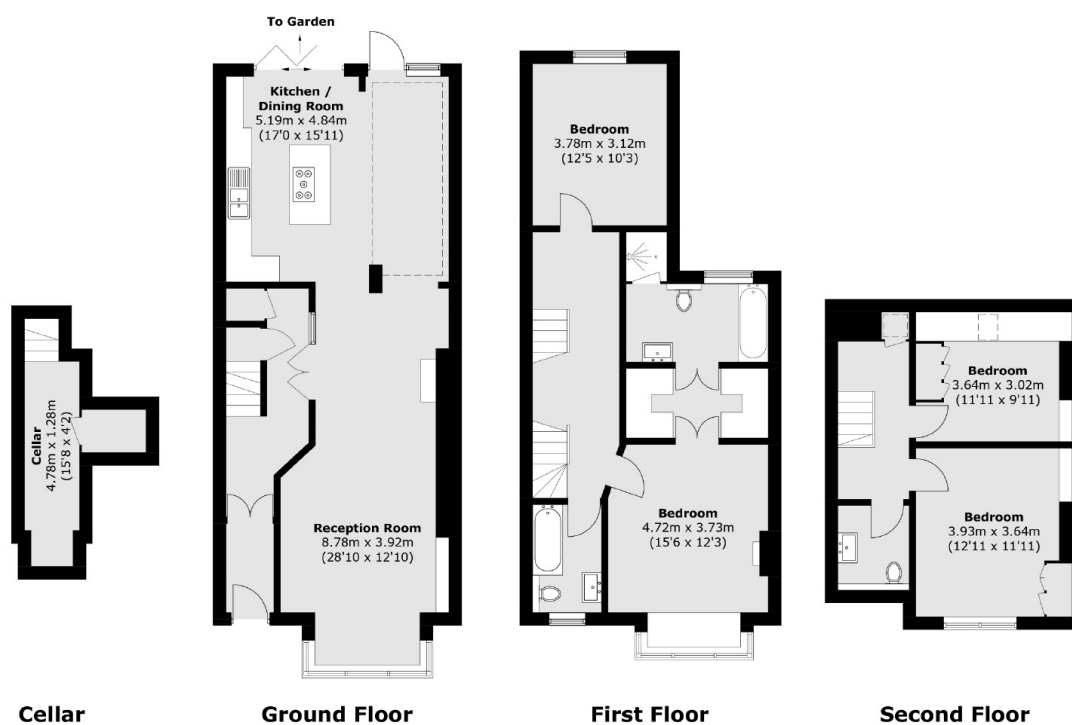
- Four Bedrooms
- Large Reception Room
- Kitchen/Dining Room
- Front & Rear Gardens
- Residents Parking Zone
- Period Features







Bramshill Gardens, London, NW5



Total area (approx.): 174.0 sq. m (1,872.9 sq. ft)