



Dartmouth Park Hill, NW5

£500,000

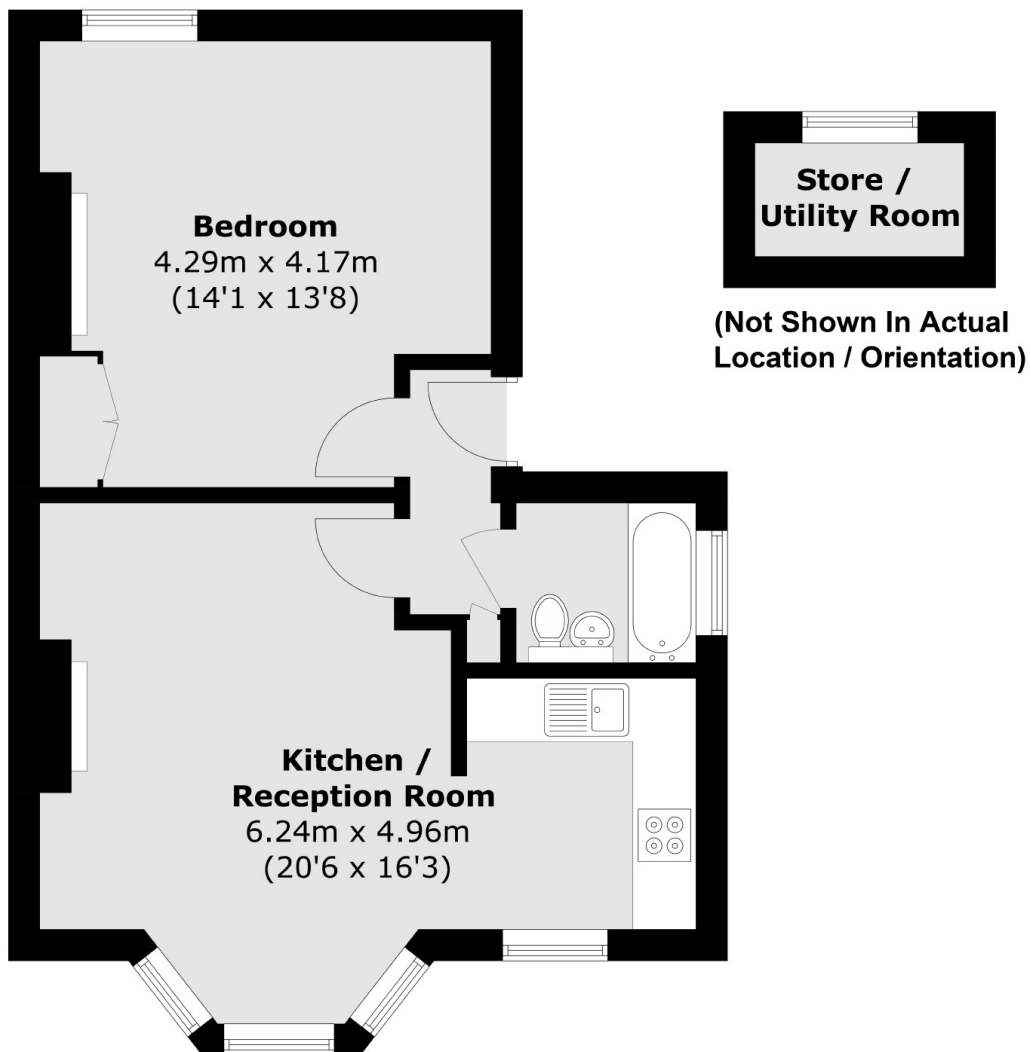
A very well-presented one bedroom first floor flat in an attractive Victorian building. The property has natural light and high ceilings throughout, and offers a spacious living area and a large double bedroom.

This period house is situated in the heart of the Dartmouth Park Conservation Area. Hampstead Heath is less than half a mile away, as are Gospel Oak (Overground) and Tufnell Park (Northern line) stations.

Features

- Large Double Bedroom
- Ample Storage
- First Floor
- Great Transport Links
- Chain Free
- Period Features

Dartmouth Park Hill, London, NW5



First Floor

Total area (approx.): 46.0 sq. m (495.1 sq. ft)
Store / Utility Room: 2.1 sq. m (22.6 sq. ft)