

York Way Estate, N7

£215,000

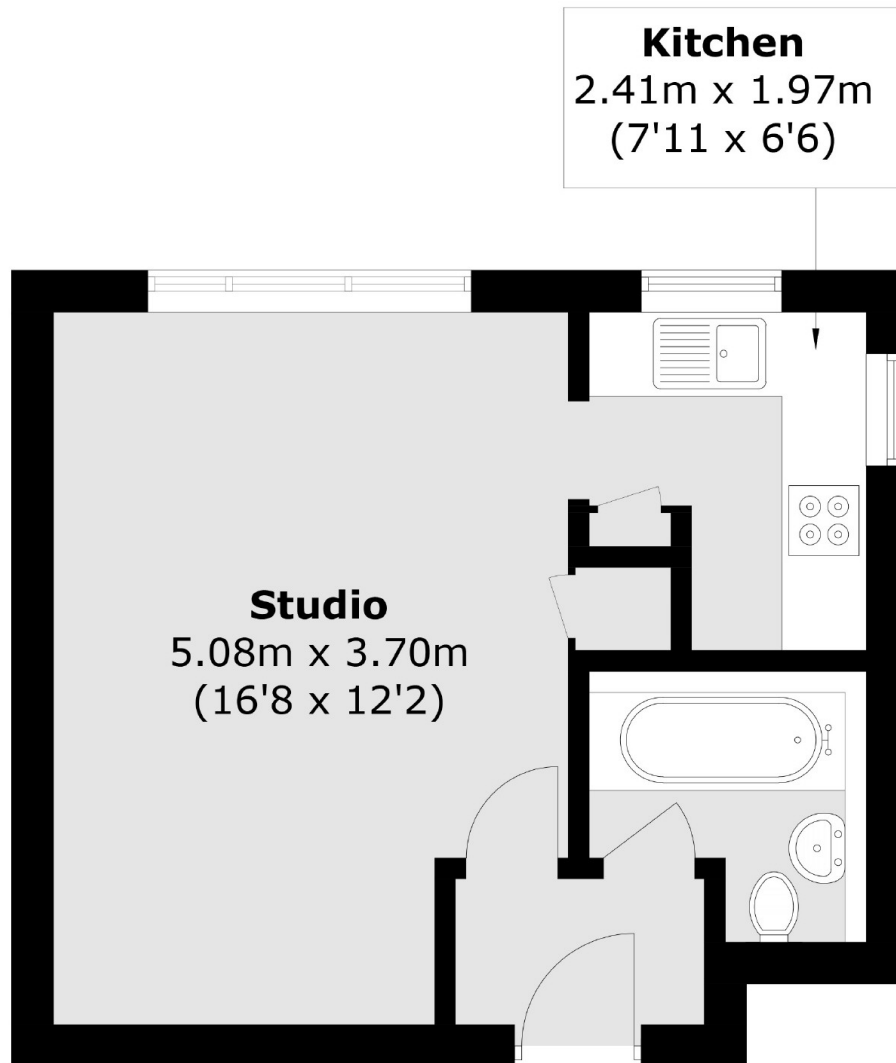
A well-proportioned studio apartment in a purpose built block. This property offers a recently renovated kitchen, a large living space, a lift for ease of access and there are sweeping views from the flat.

The York Way Estate is ideally located close to both Caledonian Road and King's Cross underground stations. The expansive Caledonian Park and Market Road Gardens are also nearby.

Features

- Studio Apartment
- Great Transport Links
- Chain Free
- Lift Access
- Great Views
- Great Amenities

York Way Estate, London, N7



Total area (approx.): 28.8 sq. m (310 sq. ft)