



Brookfield Park, NW5

£2,500,000

Dexters



Brookfield Park, NW5

A six bedroom detached house arranged over three floors with private parking and a landscaped garden. This house would be ideal for a family and is located moments from Hampstead Heath.

The ground floor accommodation has a spacious double reception room which is open plan and leads to a modern, fully fitted kitchen. There is also a second reception room/ground floor bedroom with an en suite shower room, a ground floor WC and a utility room/second kitchen.

The first and second floors comprise of five double bedrooms and four bathrooms. Further benefits include air-conditioning and wooden floors and tiled floors throughout. Externally, the property boasts a large landscaped garden and secure off-street parking.

The property is conveniently situated within close walking distance of the shops, restaurants and cafés of both Swains Lane and Highgate Village, along with transport links to central London.

Features

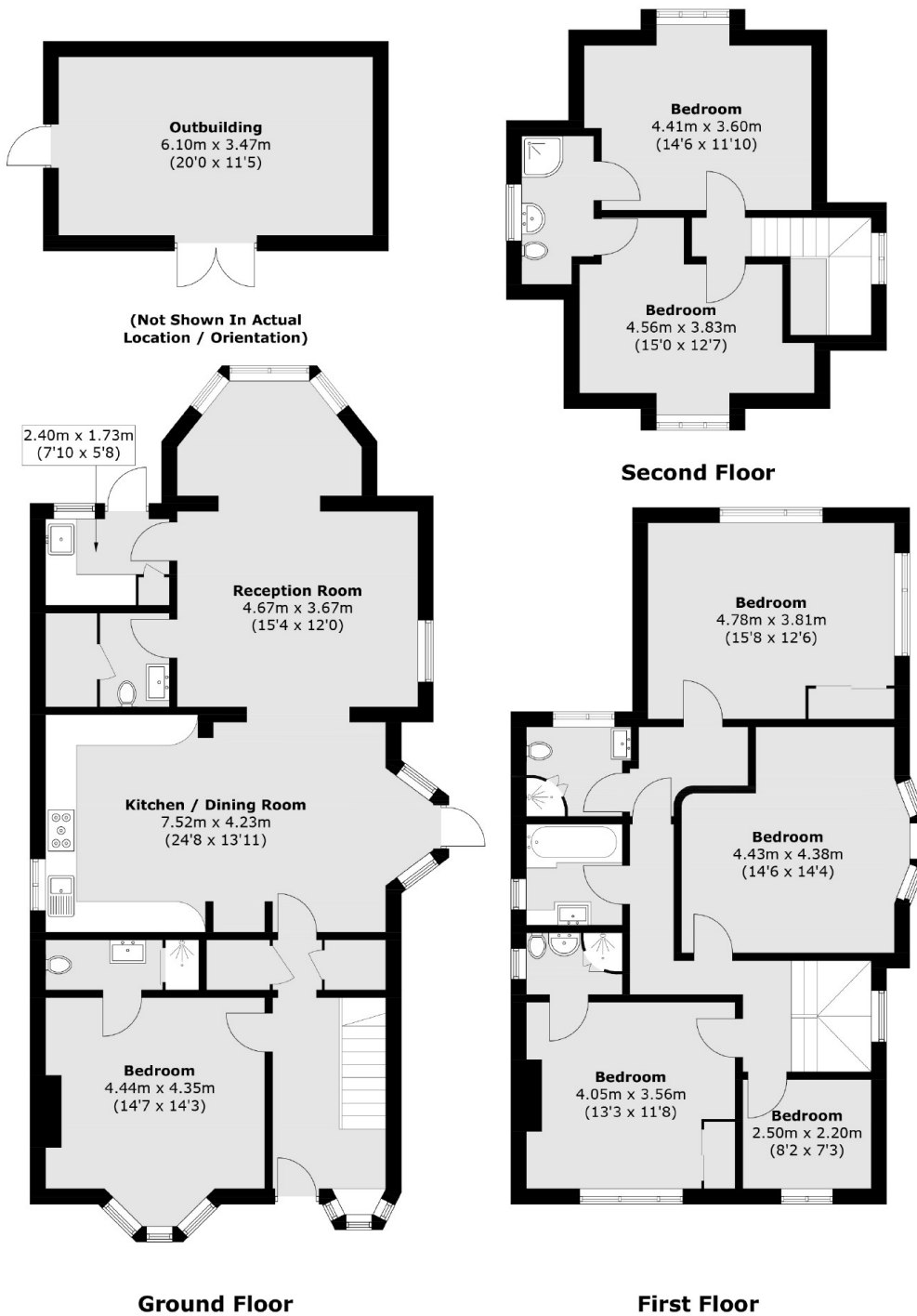
- Detached House
- Six Double Bedrooms
- Five Bathrooms
- Off-Street Parking
- Large Landscaped Garden
- Recently Refurbished







Brookfield Park, London, NW5



Total area (approx.): 218.2 sq. m (2,348.7 sq. ft)
Outbuilding: 21.5 sq. m (231.4 sq. ft)