



Marlborough Road, N19

£300,000

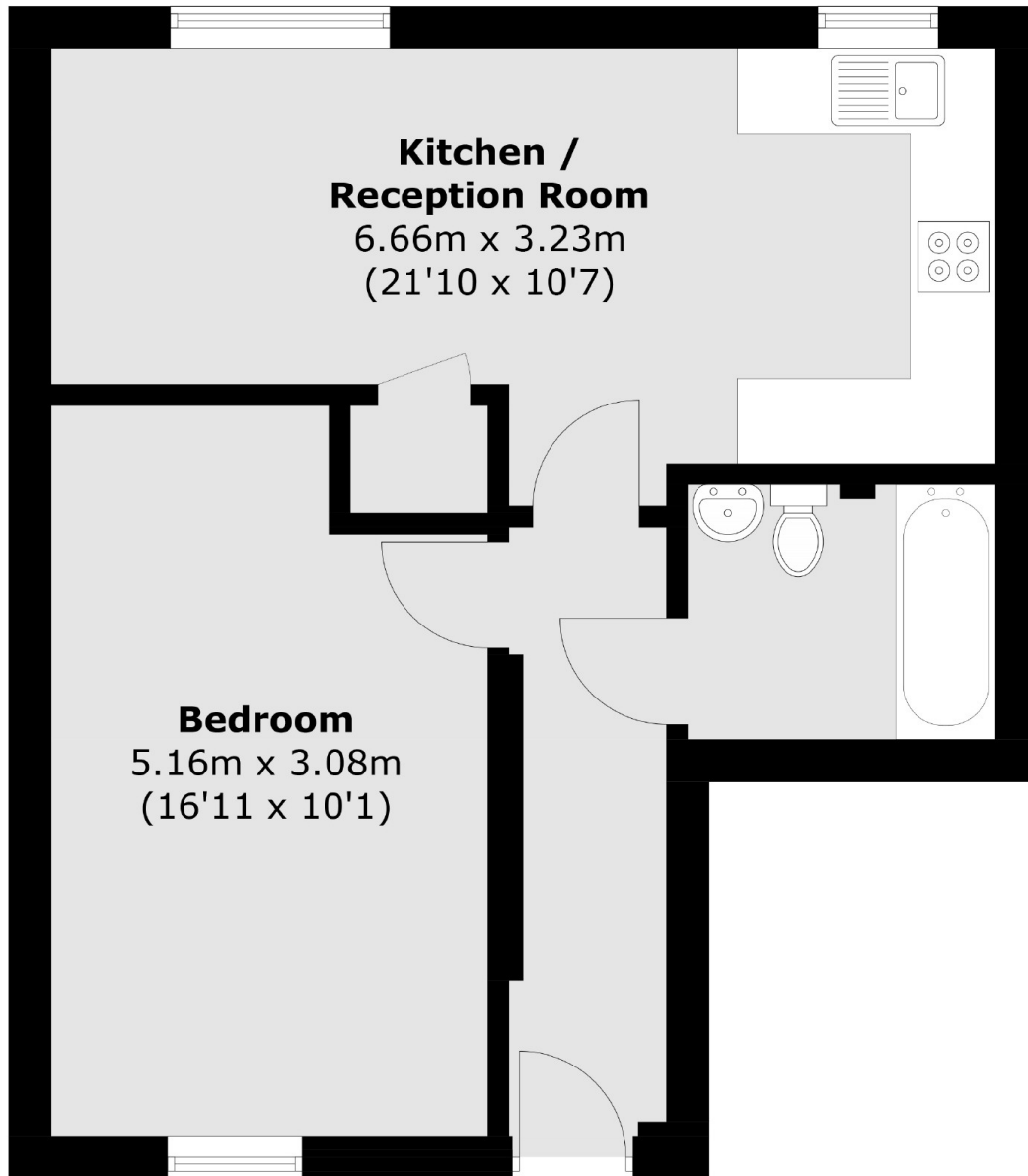
A well-presented one bedroom flat, situated on the third floor in a purpose built building. This property offers a spacious double bedroom and a large open plan kitchen/ reception room.

Marlborough Road is tree-lined with easy access to local shops, cafés and restaurants. The property is within half a mile of both Archway and Upper Holloway stations, and moments from Whittington Park.

Features

- Double Bedroom
- Great Transport Links
- Chain-Free
- Close to Local Amenities
- Lift Available
- Third Floor

Marlborough Road, London, N19



Total area (approx.): 44.8 sq. m (482.2 sq. ft)