



## Tufnell Park Road, N7

### £900,000

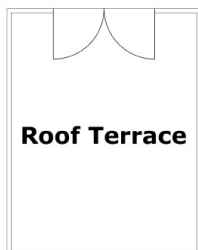
A well-presented three double bedroom apartment, set over two floors of a Victorian house. This property features a large reception room with a bay window, a separate kitchen and a fantastic private terrace.

Tufnell Park Road is moments from Tufnell Park station (Northern line) as well as Fortress Road, with its wide array of independent shops, including a Butchers, Bakery, Fishmongers and a number of restaurants.

### Features

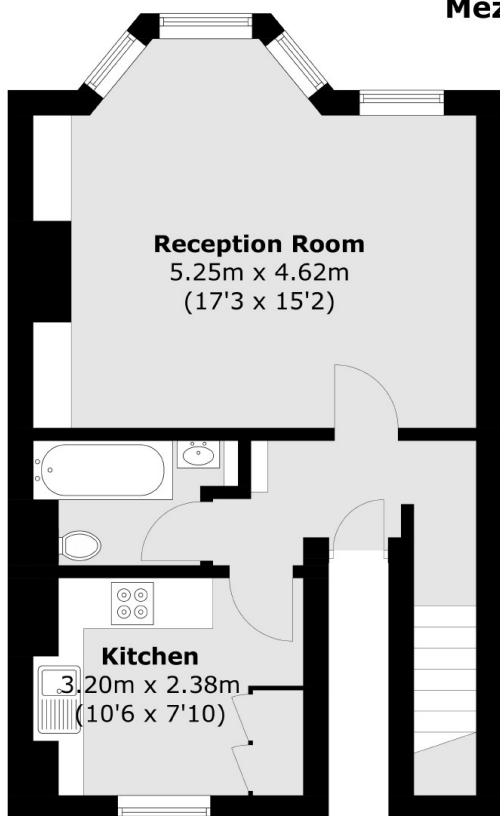
- Three Double Bedrooms
- Reception Room
- Excellent Condition
- Private Terrace
- Victorian Conversion
- South Facing

# Tufnell Park Road, London, N7

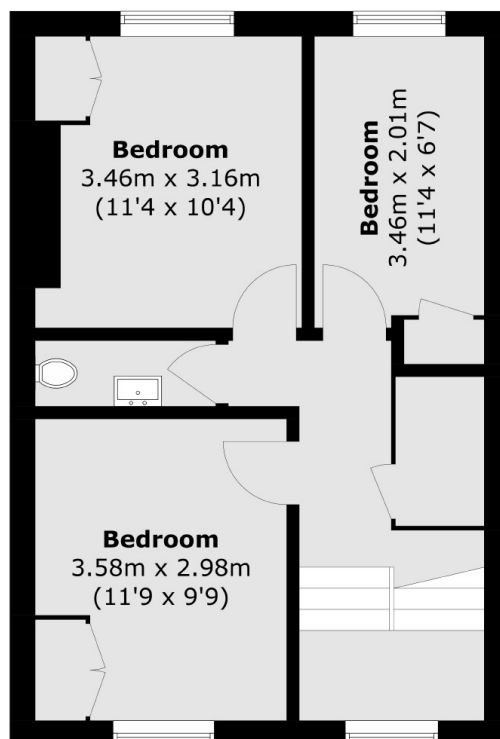


**Roof Terrace**

**Mezzanine**



**First Floor**



**Second Floor**

Total area (approx.): 83.5 sq. m (898.8 sq. ft)  
Roof Terrace area (approx.): 6.2 sq. m (66.7 sq. ft)