



Hargrave Road, N19

£450,000

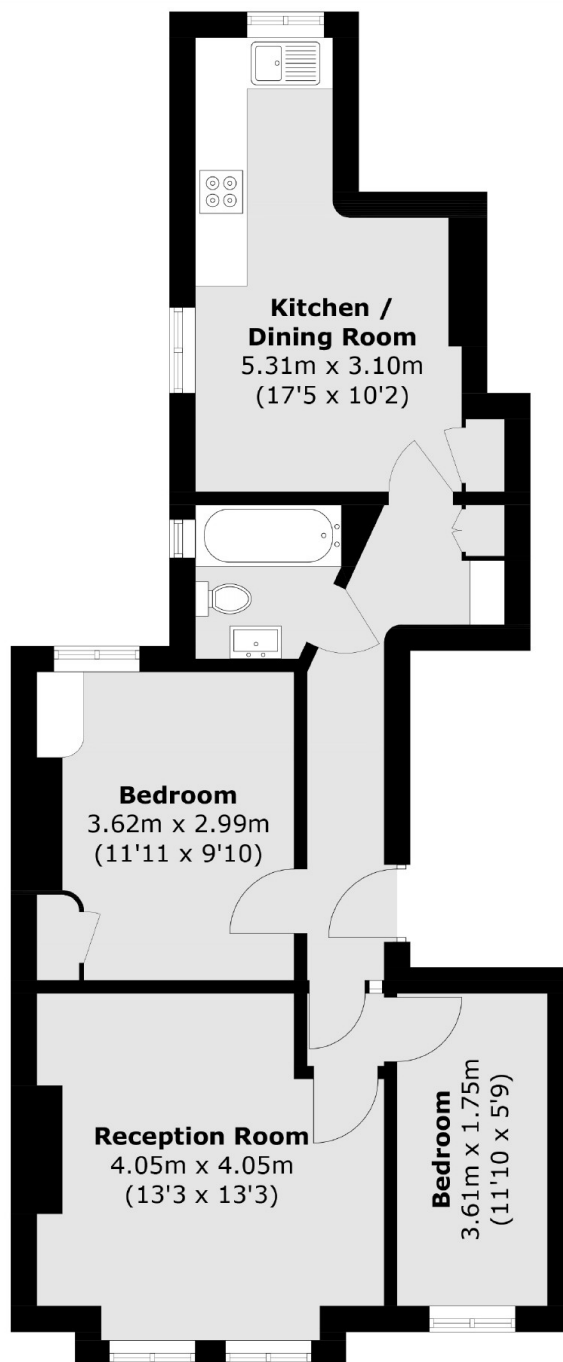
A charming two double bedroom top floor apartment, situated in an attractive Victorian mansion block. The apartment offers ample living space, including a large reception room, complete with original period features.

Hargrave Road is located close to both Archway and Tufnell Park underground stations. There is an excellent range of independent retailers on Junction Road and Fortess Road, and Hampstead Heath is within a mile.

Features

- Two Bedrooms
- Chain Free
- Separate Kitchen
- Period Features
- Wooden Floors
- Great Transport Links

Hargrave Road, London, N19



Total area (approx.): 58.6 sq. m (630.8 sq. ft)