



## Hornsey Road, N19

£450,000

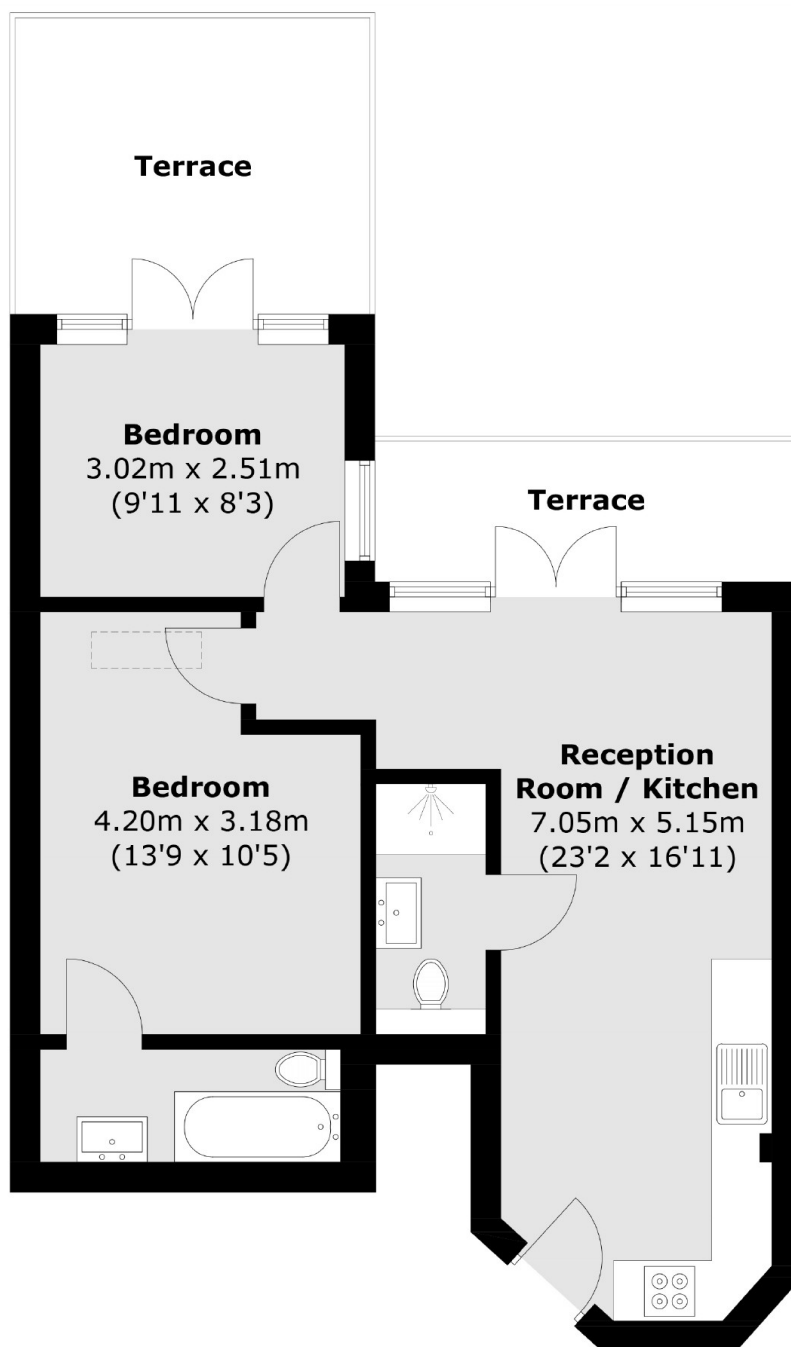
A well-presented two bedroom ground floor apartment set in a terraced Victorian building. This property offers open plan living and two terraces, with direct access from the reception room and one of the bedrooms.

This property is close to both Archway tube station (Northern line) and Finsbury Park station (Victoria line) and also not far from Upper Holloway Overground, and there are plenty of amenities close to hand.

### Features

- Two Bedrooms
- Period Conversion
- Ground Floor
- Leasehold
- Great Transport Links
- Open Plan Living

# Hornsey Road, London, N19



Total area (approx.): 49.8 sq. m (536.0 sq. ft)  
Terrace: 16.2 sq. m (174.4 sq. ft)