



Kingsdown Road, N19

£800,000

A fully renovated three bedroom split-level apartment within a Victorian terraced house. The property has large windows and high ceilings, a large open plan kitchen/living area and a spacious secluded garden.

Kingsdown Road is a quiet residential road and is close to Archway underground station (Northern line) as well as a wide variety of shops, cafés and restaurants on Holloway Road.

Features

- Three Bedrooms
- Split-Level
- Secluded Garden
- Residential Road
- Victorian Conversion
- Open Plan Living



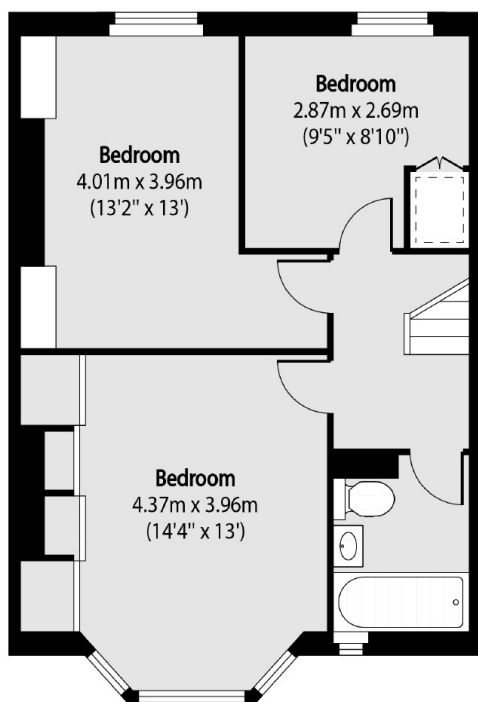
Kingsdown Road, N19

This charming Victorian conversion has a raised ground floor entrance. Leading through the main door, you have the large kitchen and reception room on your left, offering high ceilings and large windows, along with access to the private garden via a small stairwell.

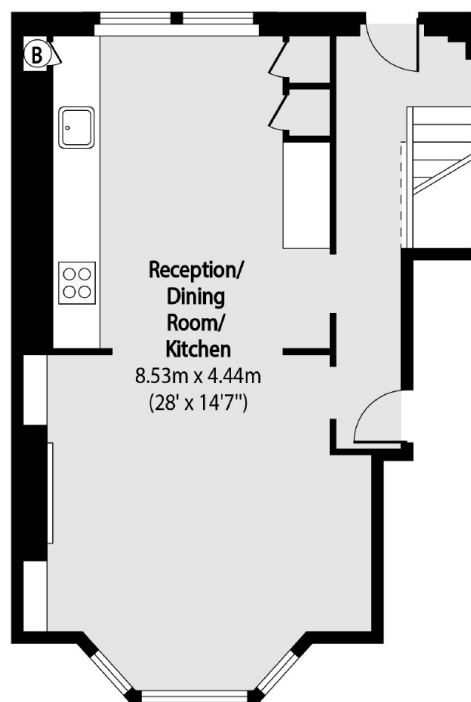
Leading down the stairs, you have two double bedrooms with built-in wardrobes and a third bedroom, currently used as a home office. This section of the property also offers a bathroom.



Kingsdown Road, London, N19



Lower Ground Floor



Raised Ground Floor

Total area (approx): 87.14 sq m (938 sq. ft)