



## Corporation Street, N7 £550,000

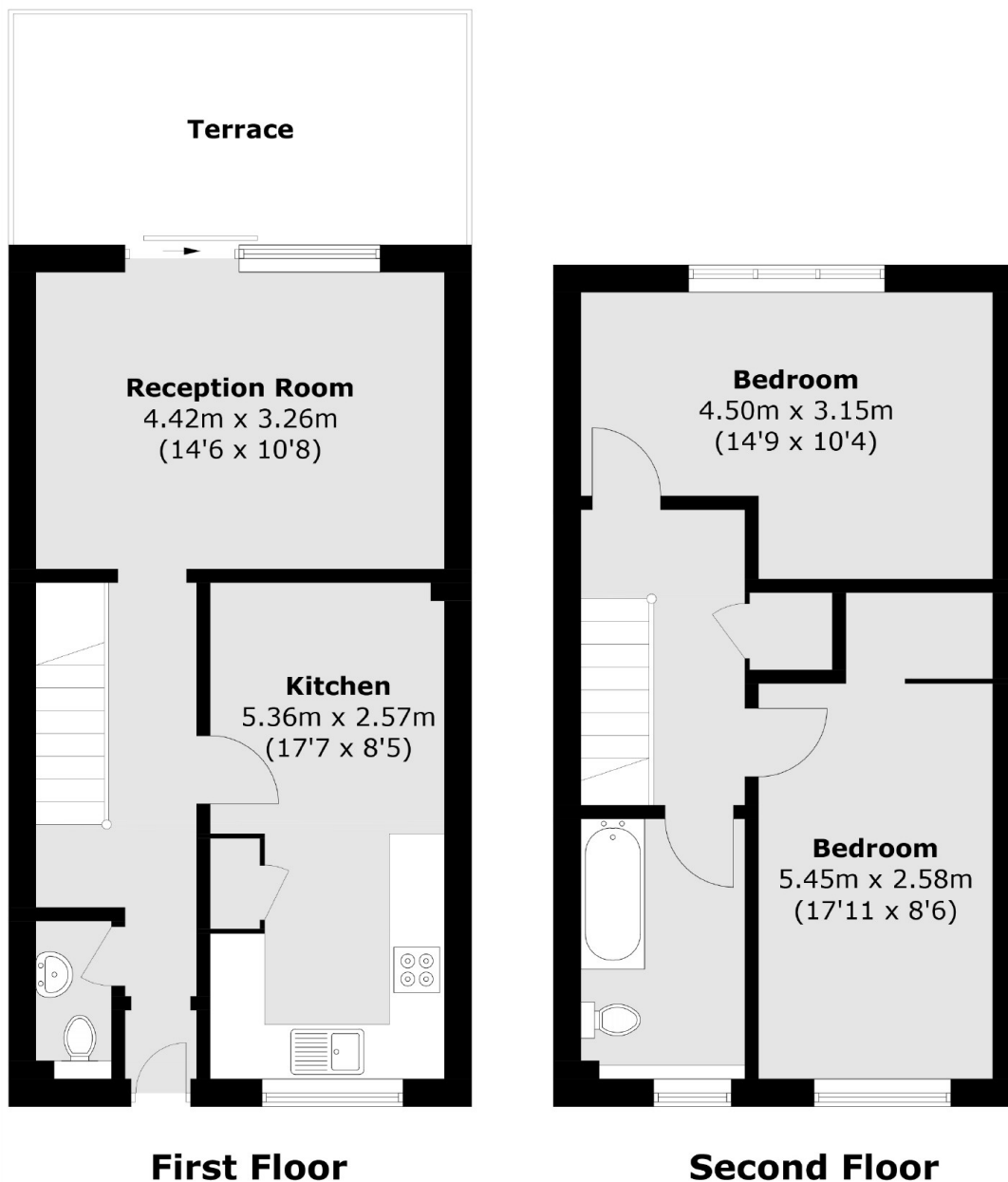
A recently renovated and spacious two bedroom apartment with a separate reception room and kitchen. The apartment has a private south facing balcony, as well as a sizable loft space for storage.

Situated between Camden, Islington and Tufnell Park and close to Caledonian Road (Piccadilly line), Tufnell Park (Northern line) and Kentish Town stations (Northern line/Thameslink).

### Features

- 173 Year Lease
- South Facing Balcony
- Separate Kitchen
- Chain Free
- Superb Transport Links
- Ample Storage

# Corporation Street, London, N7



Total area (approx.): 79.1 sq. m (851.4 sq. ft)  
Terrace area (approx.): 12.6 sq. m (135.6 sq. ft)