



St. John's Grove, N19

£775,000

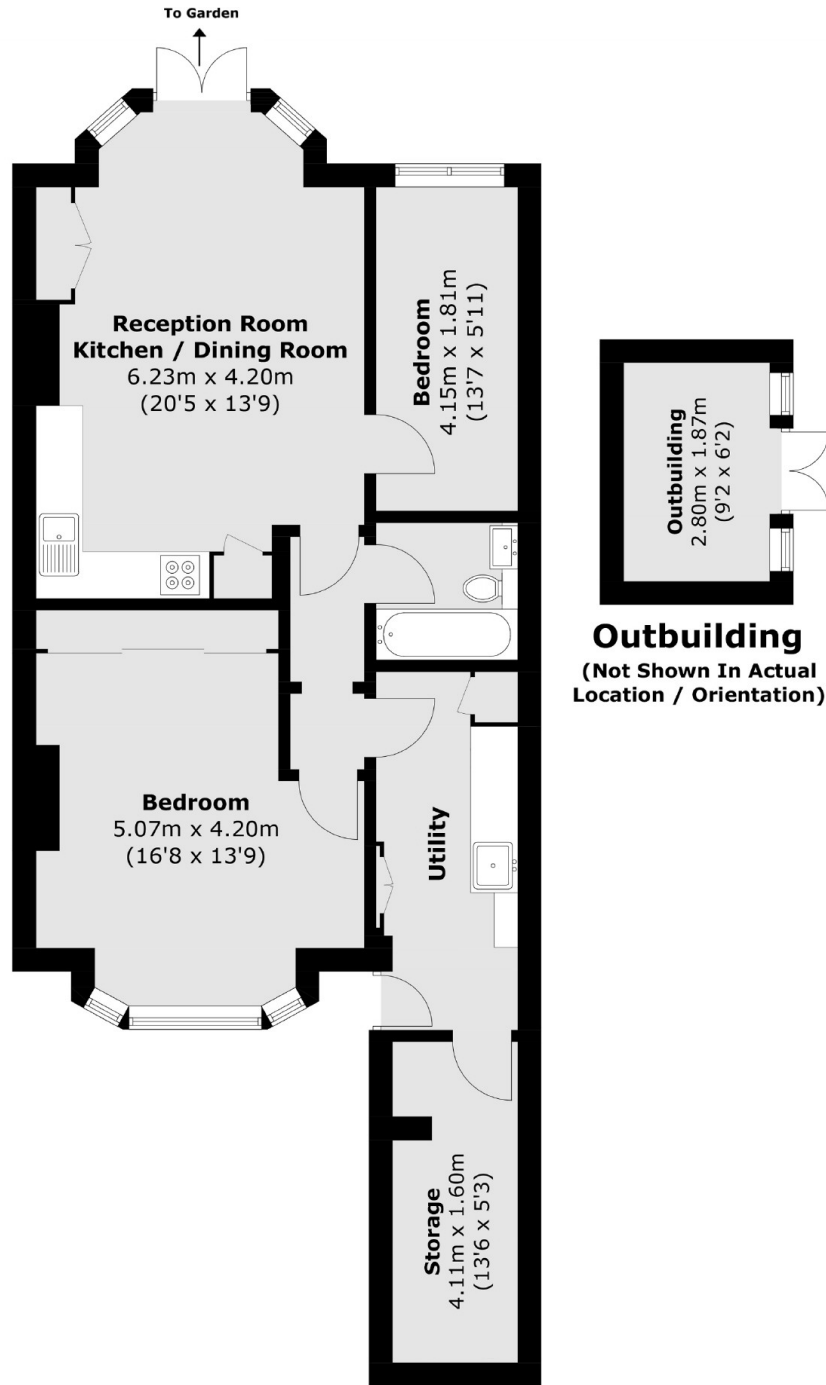
A two bedroom garden flat with a private entrance within a Victorian semi-detached house. This property is close to local amenities and enjoys an open plan kitchen and living area, and a secluded south facing garden.

Located in the heart of the St. John's Grove Conservation Area, numerous cafés, bars and shops can be found on nearby Junction Road, along with good transport links at Archway and Upper Holloway.

Features

- Two Bedrooms
- South Facing Garden
- Private Entrance
- Victorian Conversion
- Open Plan Living
- Great Transport Links

St. John's Grove, London, N19



Lower Ground Floor

Total area (approx.): 72.9 sq. m (784.7 sq. ft)
Outbuilding area (approx.): 5.4 sq. m (58.1 sq. ft)