



**St. Georges Avenue, N7**

**£2,100,000**

**Dexters**



## St. Georges Avenue, N7

An exceptional five bedroom family house, situated on a tree-lined street in Tufnell Park. The property also offers a double reception room, a large kitchen, and a converted loft.

On the ground floor are two interconnecting reception rooms, both with feature fireplaces, and at the rear of the property is a spacious kitchen with access to a mature garden. The basement offers ample storage and utility space, with potential to excavate, subject to the necessary planning permissions.

The first landing offers a bathroom and the first of five double bedrooms, and on the first floor is an en suite double bedroom. There are two more bedrooms on the second floor, along with another family bathroom plus a large loft, which has been converted into a further double bedroom.

St. Georges Avenue is located close to Tufnell Park underground station (Northern line) and is also close to an array of diverse local cafés, restaurants and independent retailers on Fortress Road. The rolling acres of Hampstead Heath are also within easy reach.

### Features

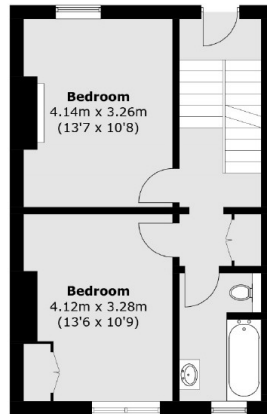
- Five Bedrooms
- Loft Conversion
- Premier Road
- Original Features
- Great Transport Links
- Chain Free



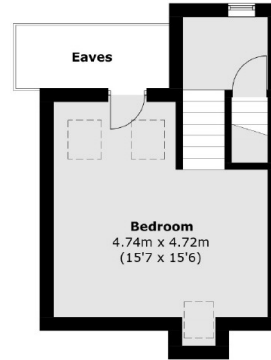




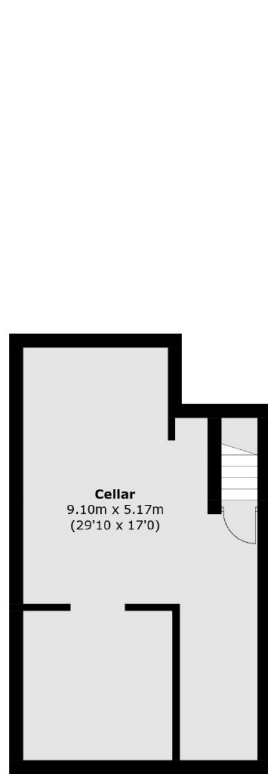
# St. Georges Avenue, London, N7



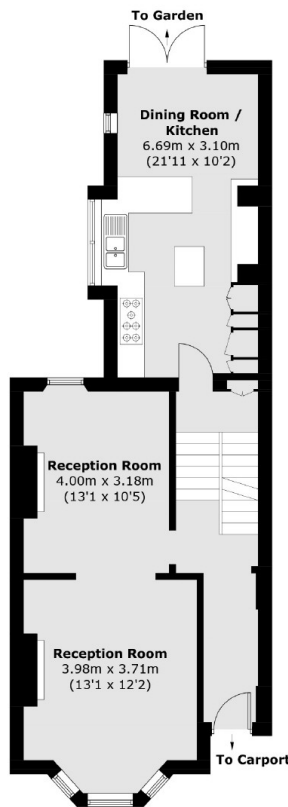
**Second Floor**



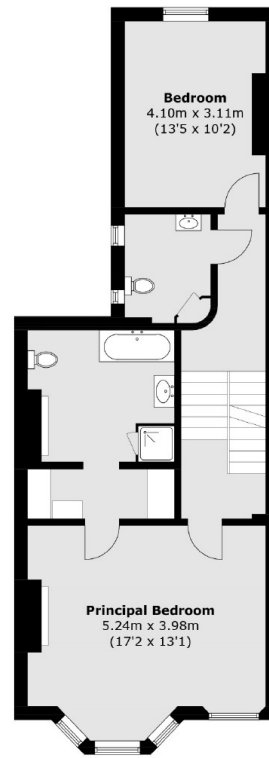
**Third Floor**



**Lower Ground Floor**



**Ground Floor**



**First Floor**

Total area (approx.): 245.9 sq. m (2,646.8 sq. ft)  
(Excluding Eaves)